

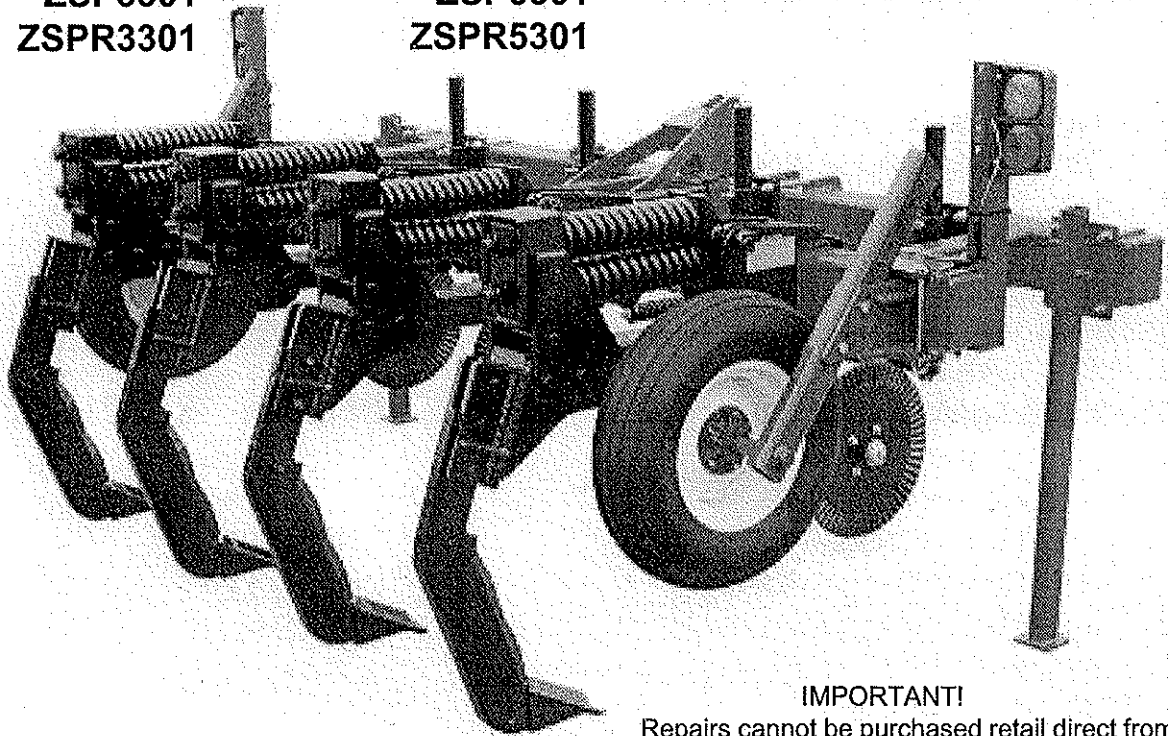
REPAIR PARTS CATALOG

Brillion

Zone Commander®

MODELS:

ZS3301	ZS4301	ZS5301	ZS6301	ZS7301	ZS8301
ZSR3301	ZSR4301	ZSR5301	ZSR6301	ZSR7301	ZSR8301
ZP3301	ZP4301	ZP5301	ZP6301	ZP7301	ZP8301
ZPR3301	ZPR4301	ZPR5301	ZPR6301	ZPR7301	ZPR8301
ZSS3301		ZSS5301			
ZSSR3301		ZSSR5301			
ZSP3301		ZSP5301			
ZSPR3301		ZSPR5301			



IMPORTANT!

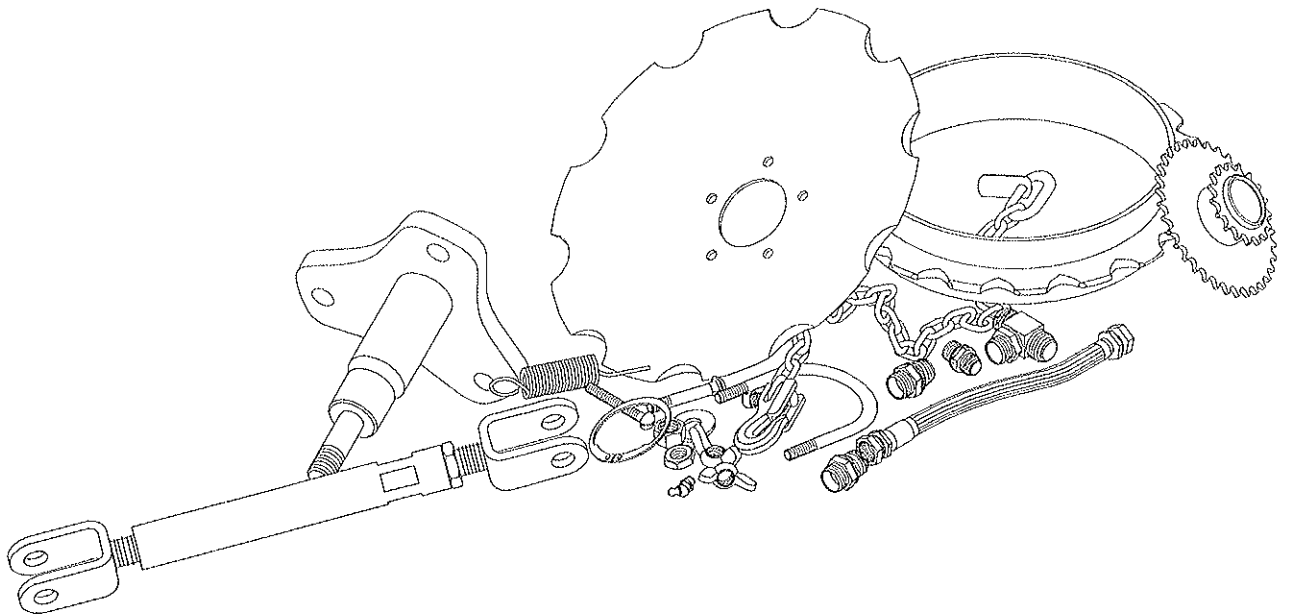
Repairs cannot be purchased retail direct from factory. Order through your Brillion dealer.

BRILLION IRON WORKS, INC.
BRILLION, WISCONSIN 54110

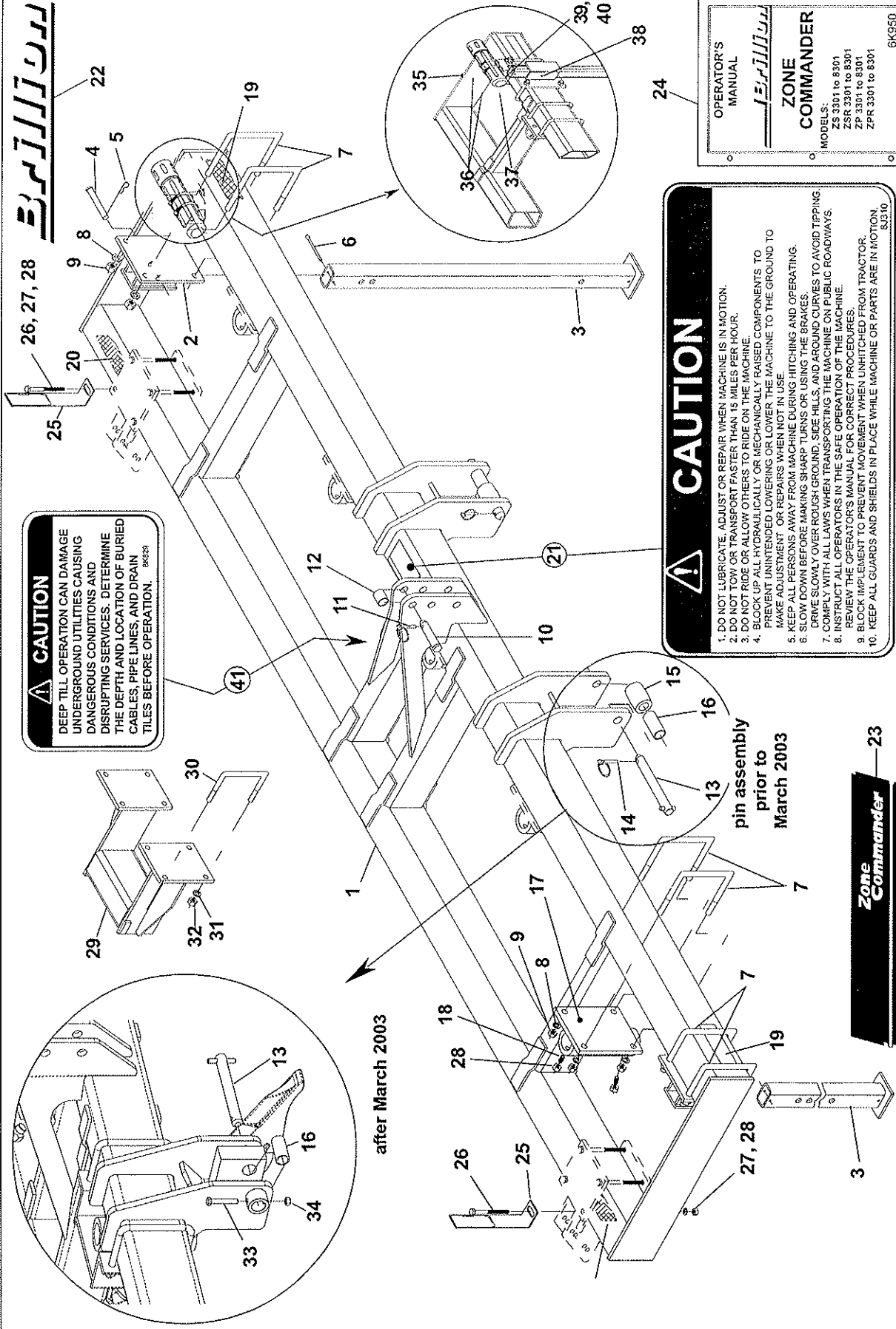
REPAIR PARTS

CONTENTS

Double Frame Assembly	2, 3
Single Frame Assembly	3a, 3b
Coulter Assembly	4, 5
Gage Wheel Assembly	6, 7
#7K851 Gage Wheel Kit	7a, 7b
Lift Assist Kit	7c-7f
Auto-Reset Shank Assembly	8, 9a, 9a&b
Shear Bolt Shank Assembly	10, 11, 11a&b
Point & Wearstrip Options	12, 13
Row Marker Kit	14, 15
Row Marker Hydraulics	16, 17
Support Arm Kits	18, 19
Disc Kits	20, 21
Basket, Ductile & Optimizer Wheel Kits	22, 23
Warning Light Kit	24
Hydraulic Cylinder	25
Index	26



BRILLIUM



CAUTION
 DEEP TILL OPERATION CAN DAMAGE UNDERGROUND UTILITIES CAUSING DANGEROUS CONDITIONS AND DISRUPTING SERVICES. DETERMINE THE DEPTH AND LOCATION OF BURIED CABLES, PIPE LINES, AND DRAIN TILES BEFORE OPERATION. 86K329

CAUTION

1. DO NOT LUBRICATE, ADJUST OR REPAIR WHEN MACHINE IS IN MOTION.
2. DO NOT TOW OR TRANSPORT FASTER THAN 15 MILES PER HOUR.
3. DO NOT RIDE OR ALLOW OTHERS TO RIDE ON THE MACHINE.
4. BLOCK UP ALL HYDRAULICALLY OR MECHANICALLY RAISED COMPONENTS TO PREVENT UNINTENDED LOWERING OR LOWER THE MACHINE TO THE GROUND TO MAKE ADJUSTMENT OR REPAIRS WHEN NOT IN USE.
5. KEEP ALL PERSONS AWAY FROM MACHINE DURING HITCHING AND OPERATING.
6. SLOW DOWN BEFORE MAKING SHARP TURNS OR USING THE BRAKES.
7. DRIVE SLOWLY OVER ROUGH GROUND, SIDE HILLS, AND AROUND CURVES TO AVOID TIPPING.
8. COMPLY WITH ALL LAWS WHEN TRANSPORTING THE MACHINE ON PUBLIC ROADWAYS.
9. INSTRUCT ALL OPERATORS IN THE SAFE OPERATION OF THE MACHINE.
10. REVIEW THE OPERATOR'S MANUAL FOR CORRECT PROCEDURES.
11. BLOCK IMPLEMENT TO PREVENT MOVEMENT WHEN UNHITCHED FROM TRACTOR.
12. KEEP ALL GUARDS AND SHIELDS IN PLACE WHILE MACHINE OR PARTS ARE IN MOTION.

83310

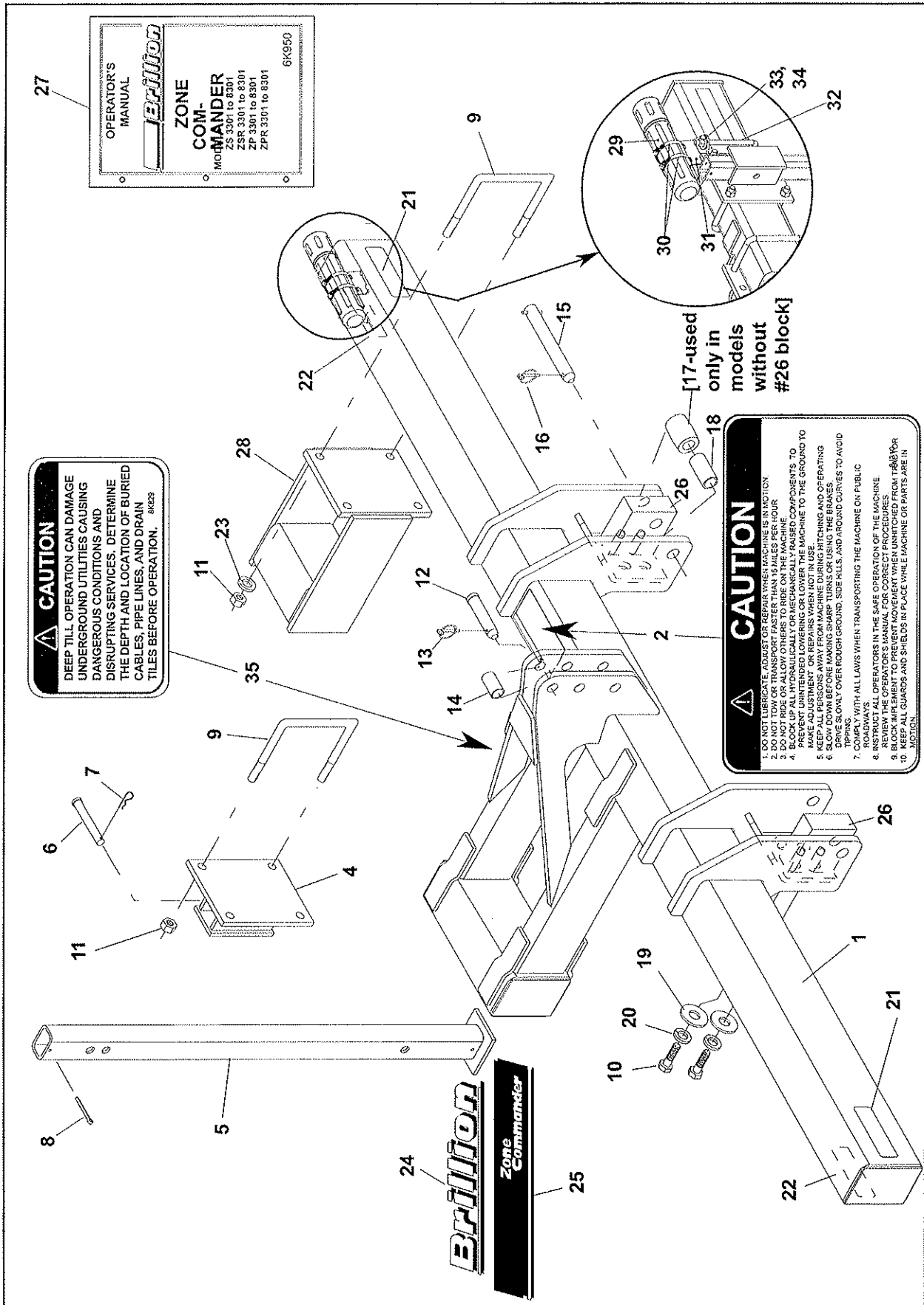
OPERATOR'S MANUAL

ZONE COMMANDER

MODELS:
 ZS 3301 to 6301
 ZSR 3301 to 6301
 ZP 3301 to 6301
 ZPR 3301 to 6301

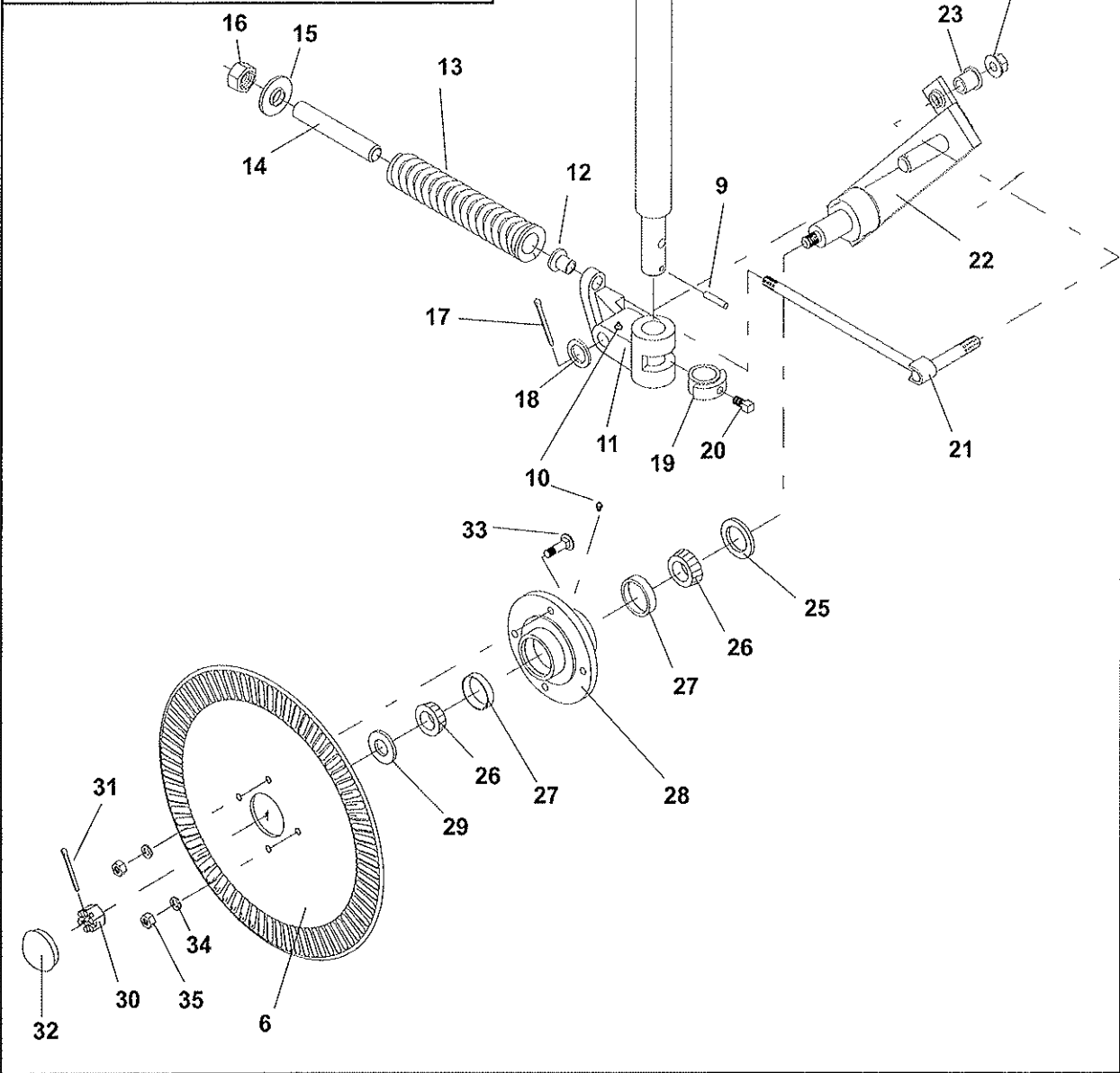
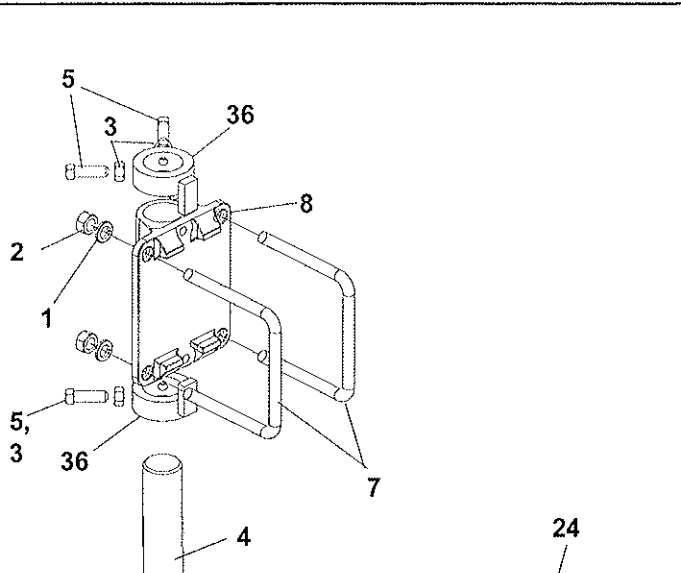
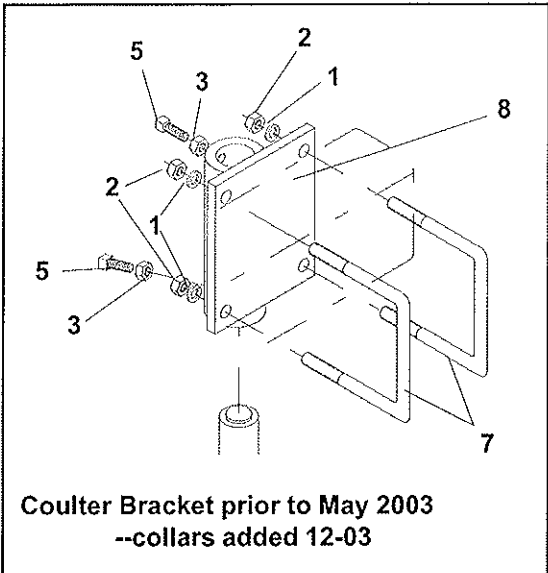
6K350

DOUBLE FRAME ASSEMBLY				
Index No.	Part No.	Description	No. Req'd.	Weight
1	8K392	Frame Weldment, 150" (3 & 4 shank models)	1	910.0
	8K393	Frame Weldment, 210" (5 & 6 shank models) (shown)	1	1112.0
	8K394	Frame Weldment, 270" (7 & 8 shank models)	1	1365.0
2	3K177	Stand Mount	2	17.97
3	3K179	Stand	2	30.28
4	5C077	Clevis Pin - 3/4 x 4	2	.52
5	6J448	Hairpin Cotter	2	.05
6	1C714	Cotter Pin	2	.03
7	3K176	U-Bolt - 3/4" 5x7	4 +2/coulter asm	2.20
8	1C211	Lock Washer, 3/4" Med.	8 +4/coulter asm	
9	1C210	Nut, 3/4-10NC Reg.	8 +4/coulter asm	
10	6D529	Clevis Pin - 1 x 4 1/2	1	1.30
11	5D110	Klik Pin	1	.10
12	5D157	Sleeve	1	.20
13	8K398	Pin Assembly, 1 1/8" dia. (Cat. II)	2	2.75
	8K399	Pin Assembly, 1 7/16" dia. (Cat III)	2	4.5
	3K174	Pin - 1 1/8 x 9 1/4 (Prior to March '03)	2	2.54
14	1J722	Klik Pin - 7/16 (Prior to March '03)	2	.20
15	8D425	Spacer [used only in models without block]	2	1.60
16	5D158	Sleeve [after March '03, small frame models only]	2	.50
17	6K678	Coulter Bracket	1 /ea. coulter	34
18	3J358	Set Screw, 5/8-11 NC x 1" - sq. Hd. Cup Pt.	3 /ea. coulter	.16
19	2J431	Decal - Amber Reflective	2	-
20	2J430	Decal - Red Reflective	2	-
21	8J310	Decal - Caution List	1	-
22	4K103	Decal - BRILLION	2	-
23	6K800	Decal - ZONE COMMANDER [®]	2	-
24	6K950	OPERATOR'S MANUAL	1	-
25	1K089	Decal Bracket	2	1.6
26	5J912	Capscrew, 5/8-11 NC x 9 1/2"	1	-
27	1B166	Lockwasher, 5/8"	1	.02
28	1C392	Nut, 5/8-11 NC	1	.07
-	3K814	Set Back Kit, (OPTIONAL) (includes items 29-32)	1 /shank	65.00
29	3K802	Set Back Bracket	1	58.05
30	3K176	U-bolt, 3/4"	4	2.20
31	1C211	Lockwasher, 3/4"	8	-
32	1C210	Nut, 3/4-10 NC	8	-
33	8C528	HHCS, 1/2-13 NC x 3" Gr. 5	2	
34	5C392	Lock Nut, 1/2-13 Stover	2	
35	8K349	Manual Cannister	1	
36	8K350	Hose Clamp #56	2	
37	8K645	Canister Bracket	1	
38	1J801	U-Bolt, 5/8-11 x 8 1/2"	1	
39	1C122	Flat Washer, 5/8"	2	
40	5C461	Lock Nut, 5/8-11	2	
41	8K829	Decal, Deep Till Caution	1	



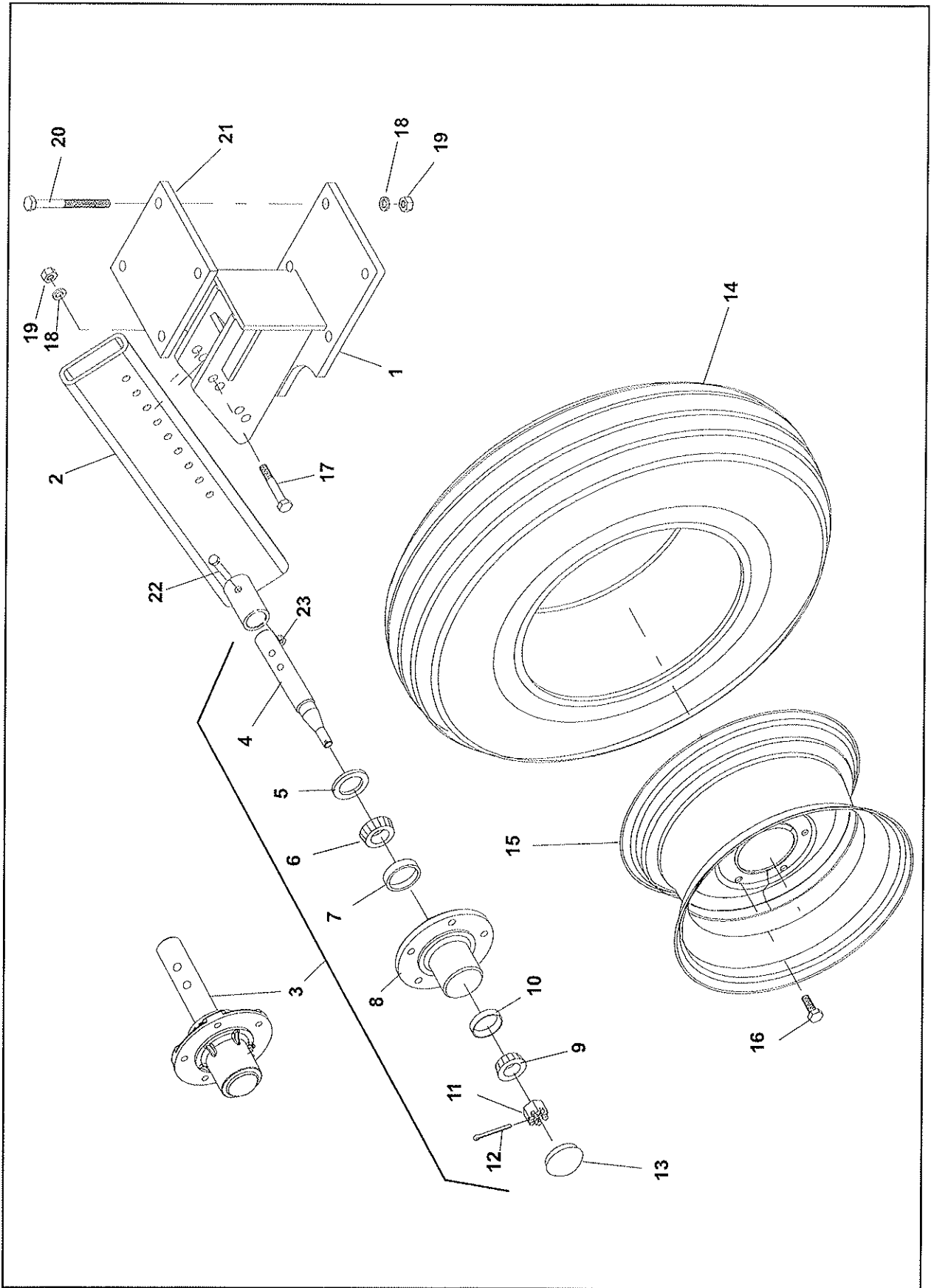
SINGLE FRAME ASSEMBLY

Index No.	Part No.	Description	No. Req'd	Weight
1	7K431	Frame - 3 Shank (Shown)	1	572
	6K675	Frame - 5 Shank	1	639
2	8J310	Decal - CAUTION	1	-
3	---	-----	--	---
4	3K177	Stand Mount	1	17.97
5	3K179	Stand	1	30.28
6	5C077	Clevis Pin - 3/4 x 4	1	.52
7	6J448	Hairpin Cotter	1	.05
8	1C714	Cotter Pin	1	.03
9	3K176	U-Bolt - 3/4" 5x7	2	2.20
10	1D424	Capscrew, 3/4-10 NC x 2" Long	4	.37
11	6C729	Nut - 3/4-10NC	8	.12
12	6D529	Clevis Pin - 1 x 4 1/2	1	1.30
13	5D110	Klik Pin	1	.10
14	5D157	Sleeve	1	.20
15	3K175	Pin Assembly - 1 1/8 x 9 1/2"	2	2.54
16	1J722	Klik Pin - 7/16	2	.20
17	8D425	Spacer (not used in conjunction with #7K263 block)	2	1.60
18	5D158	Sleeve	2	.50
19	3K786	Flat Washer, 3/4"	4	-
20	1C211	Lockwasher, 3/4"		
21	2J431	Decal - Amber Reflective	2	-
22	2J430	Decal - Red Reflective	2	-
23	1C210	Nut, 3/4"	2	
24	4K103	Decal - BRILLION	2	-
25	6K800	Decal - ZONE COMMANDER [®]	2	-
26	7K263	Block	2	
27	6K689	OPERATOR'S MANUAL	1	14.591
-	3K813	Set Back Extension Kit (OPTIONAL-1 Per Shank) - Items 28, 9, 20 & 23		65.00
28	3K800	Set Back Extension	1	58.05
29	8K349	Manual Cannister	1	
30	8K350	Hose Clamp #56	2	
31	8K645	Canister Bracket	1	
32	1J801	U-Bolt, 5/8-11 x 8 1/2"	1	
33	1C122	Flat Washer, 5/8"	2	
34	5C461	Lock Nut, 5/8-11	2	
35	8K829	Decal, Deep Till Caution		



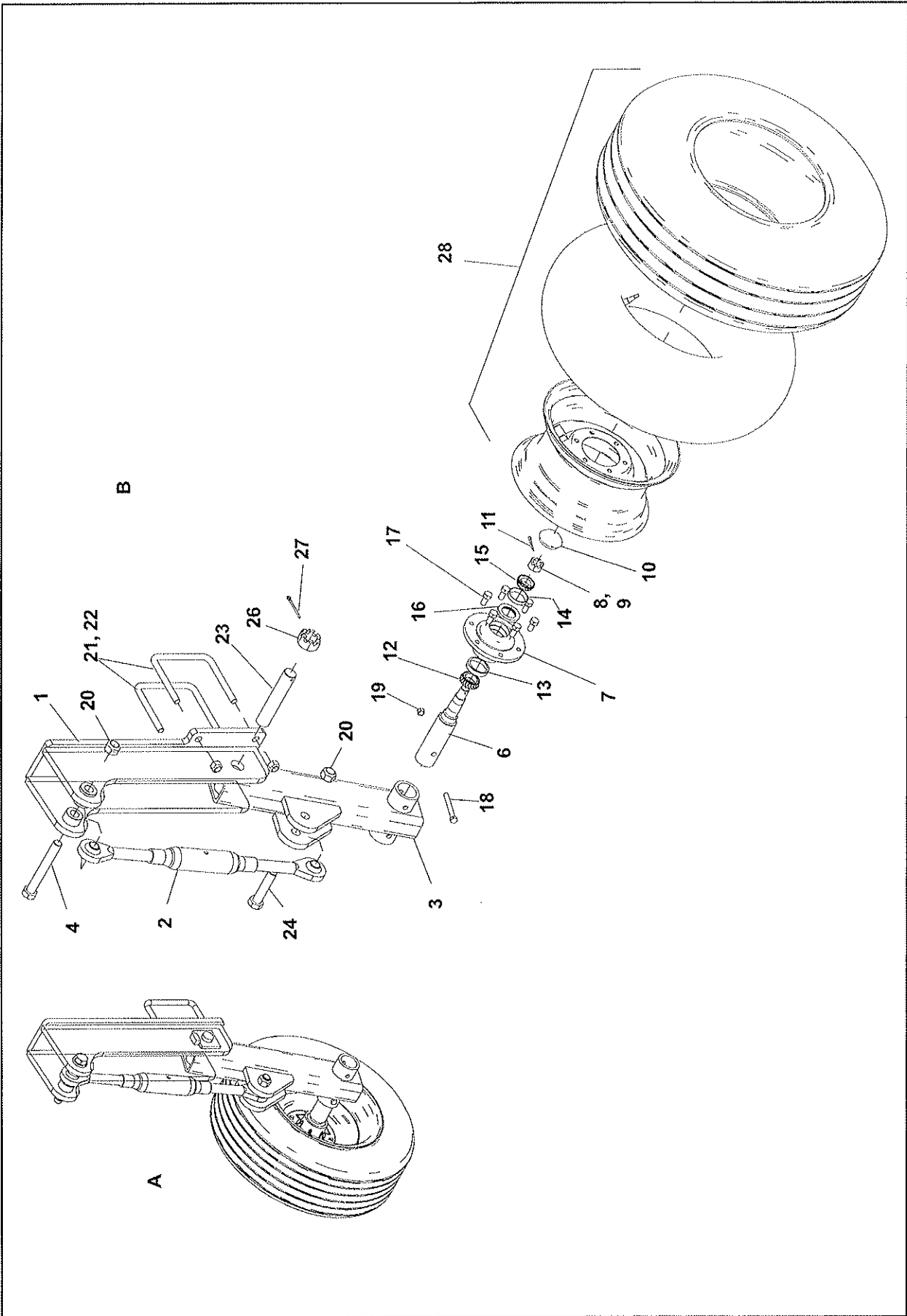
COULTER ASSEMBLY

Index No.	Part No.	Description	No. Req'd.	Weight
--	6K857	Coulter & Bracket Assembly (Includes 3K789 & items 1-8)		
-	3K789	Coulter Assembly (includes items 9-35)	1	68.25
1	1C211	Lockwasher, 3/4"	12	-
2	1C210	Nut, 3/4-10 NC	12	-
3	1C392	Nut - 5/8-11NC	4	.07
4	3K770	Coulter Shank	1	28.75
5	3J358	Set Screw, 5/8-11 NC x 2" - sq. Hd. Cup Pt.	3	.16
6	3K224	Coulter Blade - 20" Fluted	1	
7	3K176	U-Bolt , 3/4-10 NC x 7 13/16" x 6 3/4" Deep	2	.80
8	6K678	Coulter Bracket	1	-
9	4J410	Spiral Pin - 3/8 x 3"	1	
10	7C414	Grease Fitting - 1/4-28NF St.	2	
11	3K350	Mounting Casting	1	8.70
12	3K354	Bushing	1	
13	3K355	Spring	1	
14	3K356	Spring Rod Sleeve	1	
15	3K357	Washer, Coulter Spring	1	
16	3K358	Nut - 3/4-10NC, Hex Nylock	1	
17	1C869	Cotter Pin - 1/4 x 2	1	
18	6C406	Flat Washer - 1 1/4 SAE	1	
19	3K351	Coulter Stop	1	.80
20	3K352	Set Screw - 5/8-11NC x 1" SQ. Head Cup Point	1	.16
21	3K353	Spring Rod	1	
22	3K359	Coulter Swing Arm	1	
23	3K360	Bushing, Swing Arm	1	
24	3K361	Nut - 3/4-10NC, Flange	1	
25	3K362	Seal, Double Lip	1	.05
26	5C913	Bearing Cone	2	.30
27	5C914	Bearing Cup	2	.20
28	3K363	Hub	1	6.60
29	5C651	Washer	1	.01
30	4C839	Nut - 7/8-14NF Slotted Hex	1	.10
31	1C659	Cotter Pin - 3/16 x 1 1/2	1	-
32	6D337	Hub Cap	1	.10
33	9J559	Carriage Bolt - 1/2-13NC x 1 1/2	1	
34	1C109	Lock Washer - 1/2"	1	
35	1C390	Nut - 1/2-13NC Hex	1	
36	8K896	Stop Collar	2	2.7



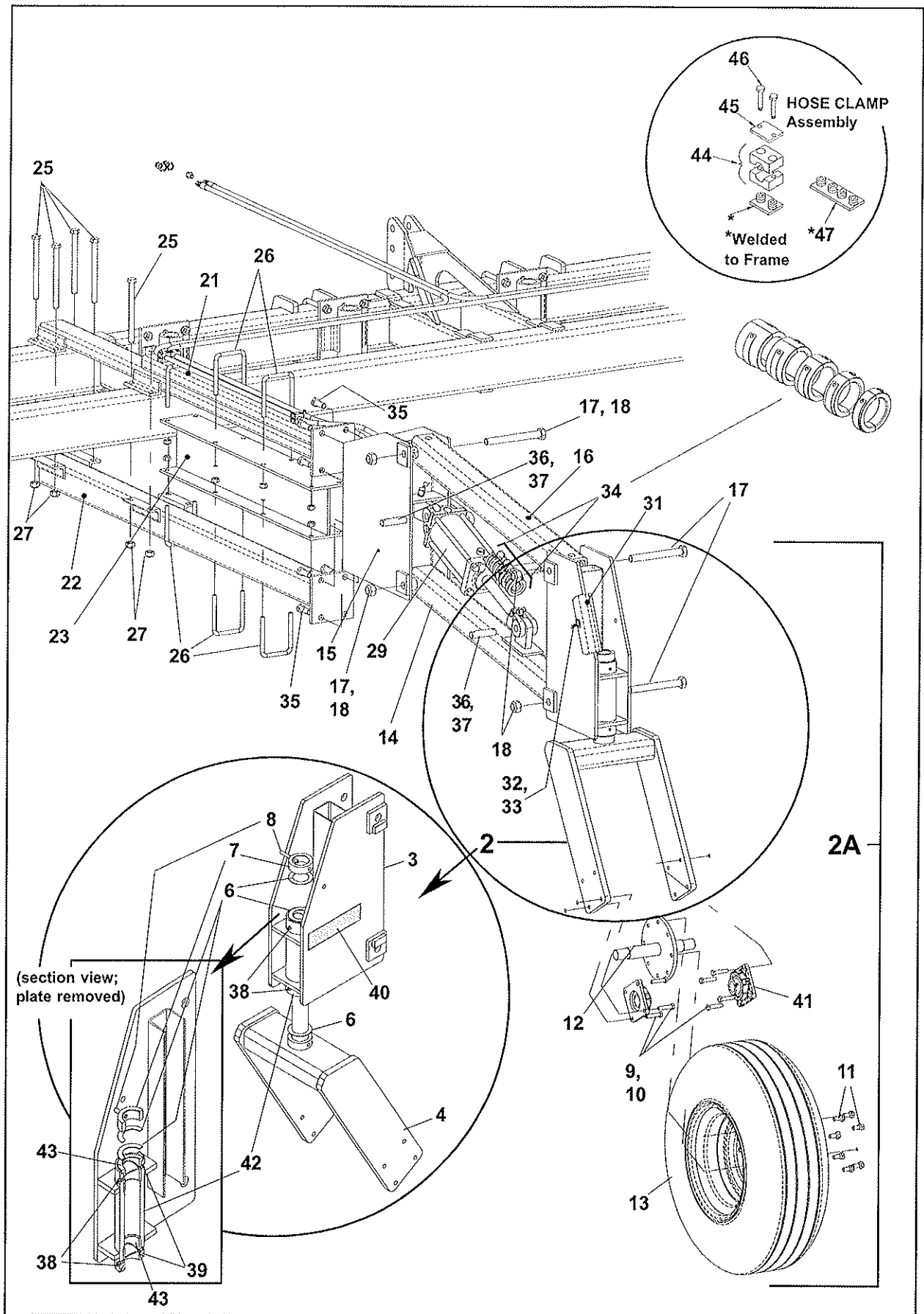
GAGE WHEEL ASSEMBLY

Index No.	Part No.	Description	No. Req'd/ Assem.	Weight
1	3K777	Mount	1	40.00
2	7K821	Gage Wheel Arm	1	53.2
	3K190	Gage Wheel w/ hub & spindle assembly [prior to Aug. 23, 2002]	1	41.80
3	9J331	Hub & Spindle Assembly [items 4-13]	1	52.20
4	9J330	Spindle	1	5.31
	1J378	Spindle (prior to Aug 23, 2002)	1	
5	1D273	Seal	1	.05
6	5C480	Bearing Cone	1	.20
7	5C479	Bearing Cup	1	.20
8	1J390	Wheel Hub	1	8.60
9	5C911	Bearing Cone	1	.30
10	5C912	Bearing Cup	1	.20
11	3C173	Slotted Nut - 3/4-16NC	1	.10
12	3C350	Cotter Pin	1	-
13	1J463	Hub Cap	1	.20
14	8J790	Tire - 9.5L-15 6 Ply. (used on 3-, 4- & 5-shank models)	1	27.00
	8J791	Tire - 11L-15 8 Ply. (used on 6-, 7- & 8-shank models)	1	38.00
15	6J189	Wheel - 15 x 8 LB, 5 Bolt	1	16.00
16	5C100	Wheel Bolt	5	.10
17	8C882	Capscrew - 5/8-11NC x 4, Gr.5	2	.40
18	1B166	Lock Washer - 5/8"	2	.02
19	1C392	Nut - 5/8-11NC	2	.07
20	5J912	HHCS, 5/8 x 9 1/2	4	-
21	3K788	Mount Plate	1	10.70
22	8C528	HHCS. 1/2-13 NC x 3"	1	.20
23	5C392	Lock Nut, 1/2-13 NC	1	.13



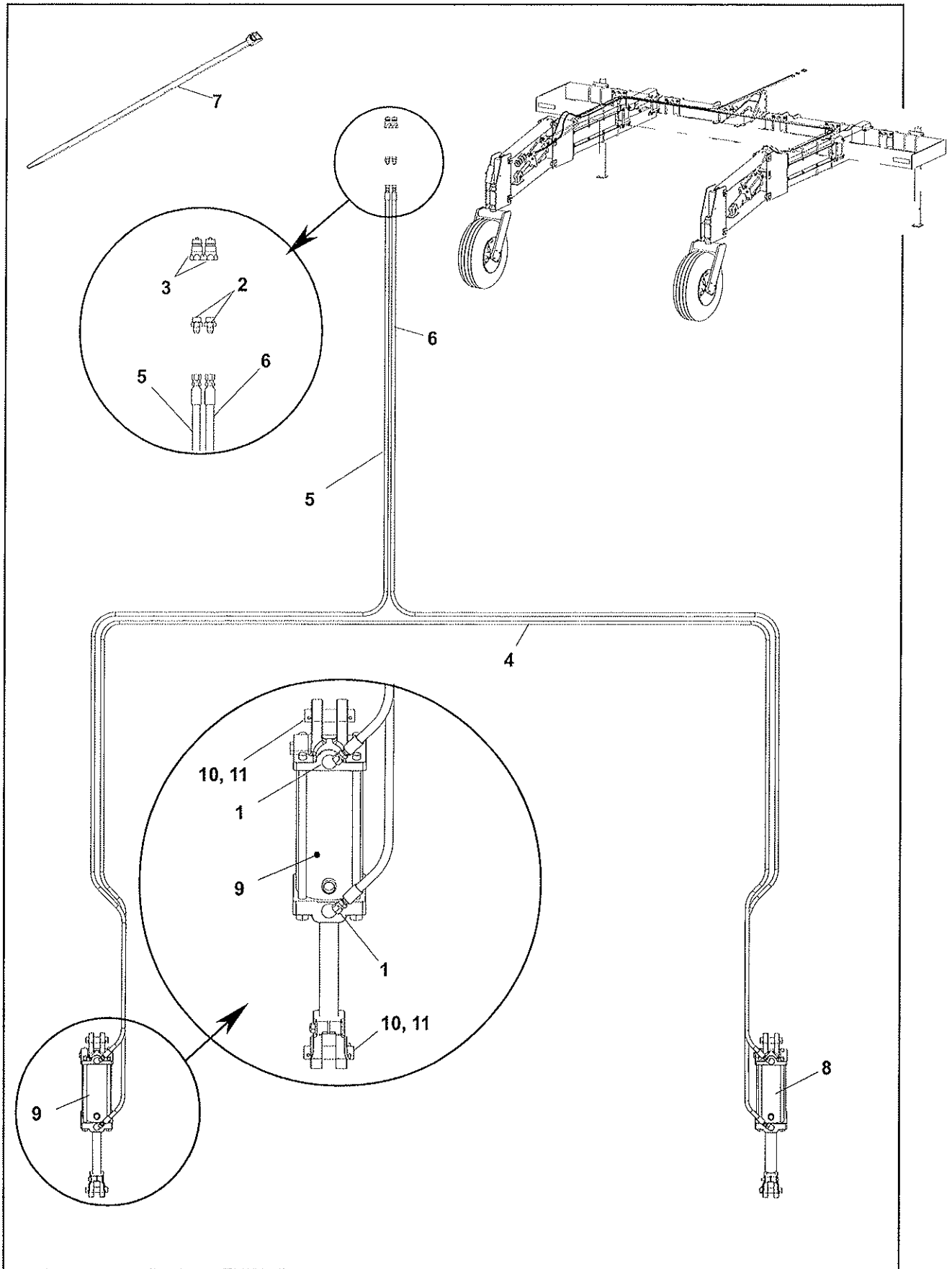
#7K851 GAGE WHEEL KIT

Index No.	Part No.	Description	No. Req'd.	Weight
A	7K709	Gage Wheel Assembly, LH	1	
B	7K710	Gage Wheel Assembly, RH	1	
1	7K776	Gage Wheel Bracket, LH	1	
	7K779	Gage Wheel Bracket, RH	1	
2	7K286	Top Link	2	
3	7K786	Gage Wheel Arm	2	
4	6K294	HHCS 1-8 x 7 1/2", Gr. 5, zp	2	
5	7K511	Hub and Spindle	2	
6	7K512	Spindle	2	
7	6D336	Wheel Hub	2	
8	1C871	Flat Washer -- SAE	2	
9	6D284	Slotted Nut	2	
10	6D337	Hub Cap	2	
11	1C788	Cotter Pin	2	
12	5C913	Bearing Cone LM67048	2	
13	5C914	Bearing Cup LM67010	2	
14	5C479	Bearing Cup LM48510	2	
15	5C480	Bearing Cone LM48548	2	
16	6D338	Seal National 200335	2	
17	5C100	Wheel Bolt	12	
18	5D335	HHCS, 1/2-13 x 4, Gr 5, ZP	2	
19	5C392	Lock Nut, 1/2-13, Gr. B, ZP	2	
20	6D306	Lock Nut, 1-8, Gr. B, ZP	4	
21	3K176	U Bolt, 3/4-10 x 7 13/16 x 6 3/4, ZP	4	
22	6C729	Lock Nut, 3/4-10, gr. B zp	8	
23	7K790	Pivot Bolt	2	
24	8D922	HHCS, 1-8 x 4 1/2, Gr. 5, ZP	2	
25	9D693	Grease Fitting, 1/8 PTF x 65°	2	
26	2J716	Nut, Hex Slotted, 1 1/2-6	2	
27	6D049	Cotter Pin, 1/4 x 2 1/2, ZP	2	
28	6K922	6 Bolt Wheel Assembly	2	



**#8K341(Pull-Type)
#8K455(3-Pt. Hitch) LIFT ASSIST KIT**

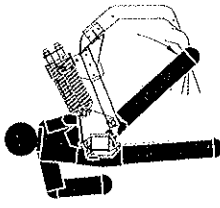
Index No.	Part No.	No. Req'd	Description	Weight (#)
	8K341	1	Lift Assist Full Assembly (Pull Type) [Items 1, 2, 20, 28 & 29] ..	2382.0
	8K455	1	Lift Assist Full Assembly (3 Pt Hitch) [Items 1, 2, 20, 28 & 29] .	2376.0
1	8K411	2	Lift Assist Rear Assembly (Items 14-19)	401.33
2A	8K431	2	Complete Castor Asembly (items 2, 9-13, 40 & 41).....	381.88
2	8K435	2	Castor Assembly (items 3-8 & 38, 39)	249.23
3	8K437	2	Pivot Frame Weldment	131.82
4	8K436	2	Wheel Arm Weldment	116.05
5	8K607	2	Bearing Assembly (items 39, 42, 43)	18.62
6	7J142	3	Machinery Bushing, 2" x 3" x 14 Ga.08
7	6K284	2	Collar	1.07
8	4J410	2	Roll Pin, 3/8" x 3", ZP05
9	5C392	16	Lock Nut, 1/2-13 NC Gr. B ZP04
10	1J486	16	HHCS, 1/2-13 NC x 2 1/2" Gr. 5, ZP17
11	3J609	16	Hex Wheel Bolt, 9/16-18 NC x 1" Gr 5, ZP17
12	8K432	2	Shaft Weldment, 8 bolt	19.81
13	6K932	2	Wheel & Tire Assembly	97.87
14	8K428	2	Lower Arm	73.27
15	8K422	2	Bracket, Lift Assist	137.43
16	8K427	2	Upper Arm	68.06
17	8K096	4	HHCS, 1-8 NC x 8 1/2", Gr. 5	2.22
18	6D306	8	Lock Nut, 1-8 NC29
19	2K062	4	HHCS, 1-8 NC x 9", Gr. 8	2.33
20	8K447	2	Lift Assist Beam Assembly (items 21-27)	325.43
21	8K412	2	Beam, Top Support Weldment.....	115.70
22	8K417	2	Beam, Bottom Support Weldment	100.32
23	8K419	2	Beam, Center Weldment	88.91
24	6C729	16	Lock Nut, 3/4-10 NC13
25	3J578	16	HHCS, 3/4-10 NC x 9", Gr. 5	1.27
26	9D989	16	U-Bolt, 5/8-11 NC x 4 11/16" x 5 5/8"	1.12
27	5C461	32	Lock Nut, 5/8-11 NC07
28	2K094	1	Hydraulic Cylinder, 4 1/2 x 8 (Right side)	112.29
29	2K093	1	Hydraulic Cylinder, 4 3/4 x 8, (shown —Left side)	105.46
30	6J651	1	Transport Lock (Right side, not shown-For cylinder #2K094) ...	4.68
31	6J650	1	Transport Lock (Left side, shown -For cylinder #2K093)	3.78
32	3C335	2	Clevis Pin19
33	4C856	2	Hairpin Cotter	-
34	8K477	2	Stroke Control Segments, (set of 4 segments)	5.37
35	4D957	16	HHCS, 3/4-10 NC x 2 1/4"43
36	7J067	4	Clevis Pin, 1" x 4"87
37	6C468	8	Cotter Pin, 3/16" x 2"	-
38	9D923	2	Grease Fitting, 1/8 PTF x 11/16"	-
39	1C737	2	Set Screw, 3/8-16 NC x 1/2" cup point, ZP012
40	2J431	2	Decal, Amber Reflective	-
41	4D645	2	Flange Bearing	5.89
42	6K276	2	Bearing Housing	15.54
43	8K444	4	Bushing.....	1.53
			Hose Clamps	
44	4K900	8	Clamp Pair, .67 Dia.47
45	4K903	8	Top Plate06
46	1K204	16	Capscrew, 1/4 x 1 1/2" Hex Hd03
47	4K905	4	Base Plate (double)	-



**#8K341(Pull-Type)
#8K455(3-Pt. Hitch) LIFT ASSIST HYDRAULICS**

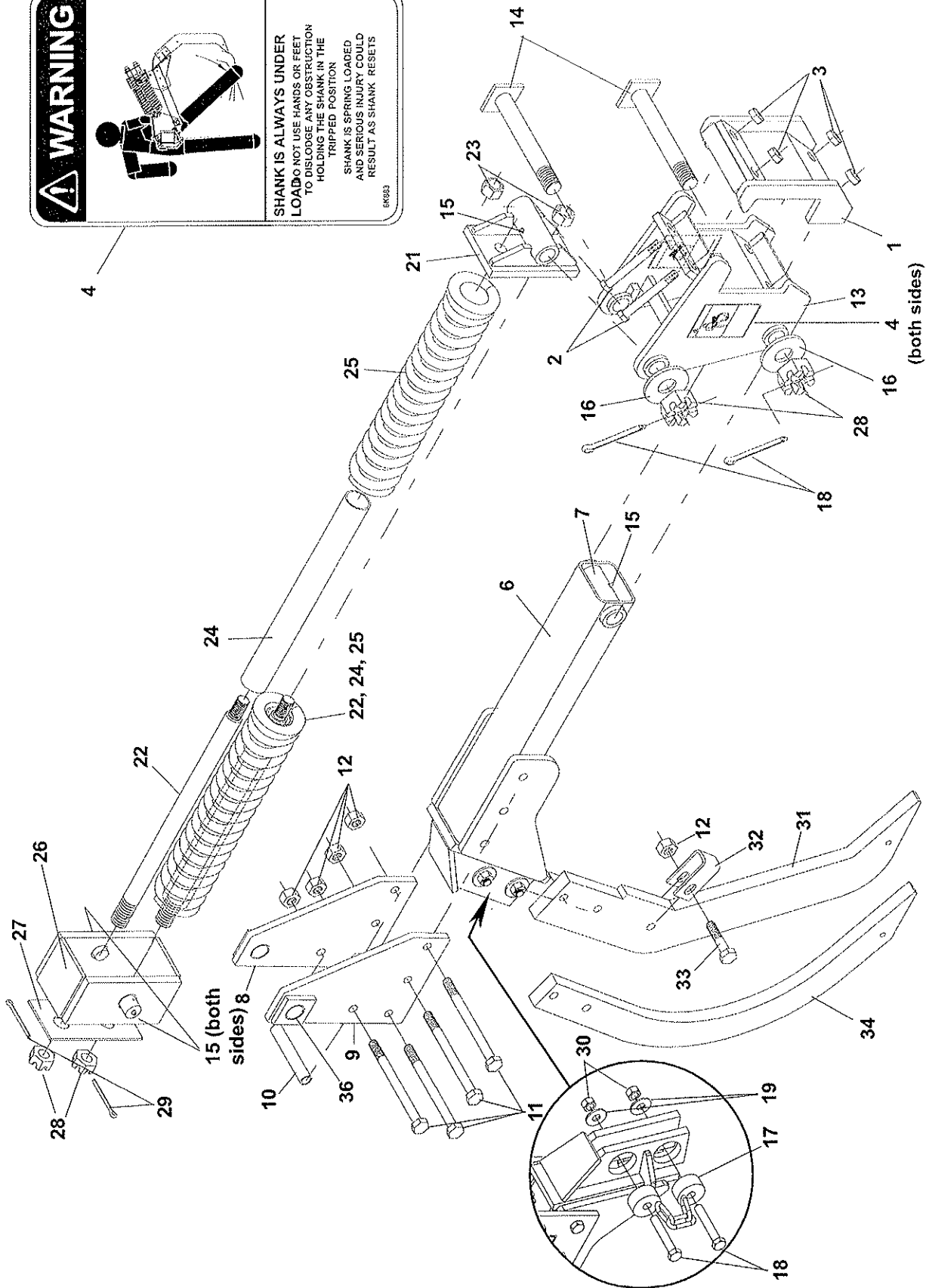
Index No.	Part No.	Description	No. Req'd.	Weight
1	7K719	90 Degree Elbow	4	
2	7K708	Adapter	2	
3	4K912	Male Tractor Tip	2	
4	8K449	Hydraulic Hose, 3/8" x 300"	1	
5	8K450	Hydraulic Hose, 3/8" x 396" (Pull-Type Kit)	1	
	8K452	Hydraulic Hose, 3/8" x 228" (3 Pt. Hitch Kit)	1	
6	8K451	Hydraulic Hose, 3/8" x 424" (Pull-Type Kit)	1	
	8K453	Hydraulic Hose, 3/8" x 256" (3 Pt. Hitch Kit)	1	
7	7K678	Cable Tie	10	
8	2K094	Hydraulic Cylinder, 4 1/2 x 8	1	
9	2K093	Hydraulic Cylinder, 4 3/4 x 8	1	
10	7J067	Clevis Pin, 1" x 4"	4	
11	6C468	Cotter Pin, 3/16" x 2"	8	
-	8K448	Instruction sheet (not shown)	1	

WARNING



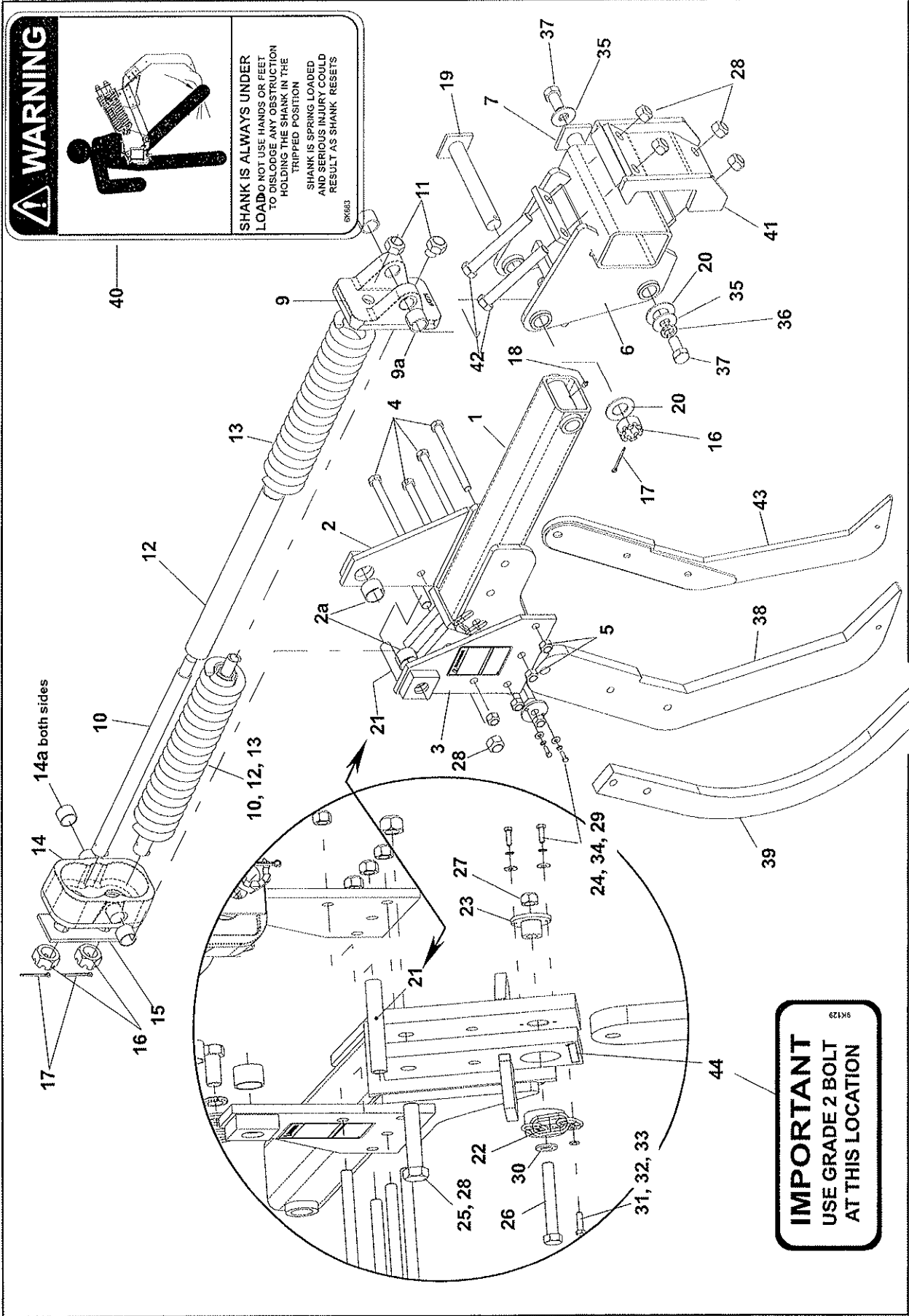
SHANK IS ALWAYS UNDER LOAD. DO NOT USE HANDS OR FEET TO DISLodge ANY OBSTRUCTION TRIPPING POSITION. SHANK IS SPRING LOADED AND SERIOUS INJURY COULD RESULT AS SHANK RESETS.

6K683



AUTO-RESET SHANK ASSEMBLY (Prior to Jan 20, 2003)

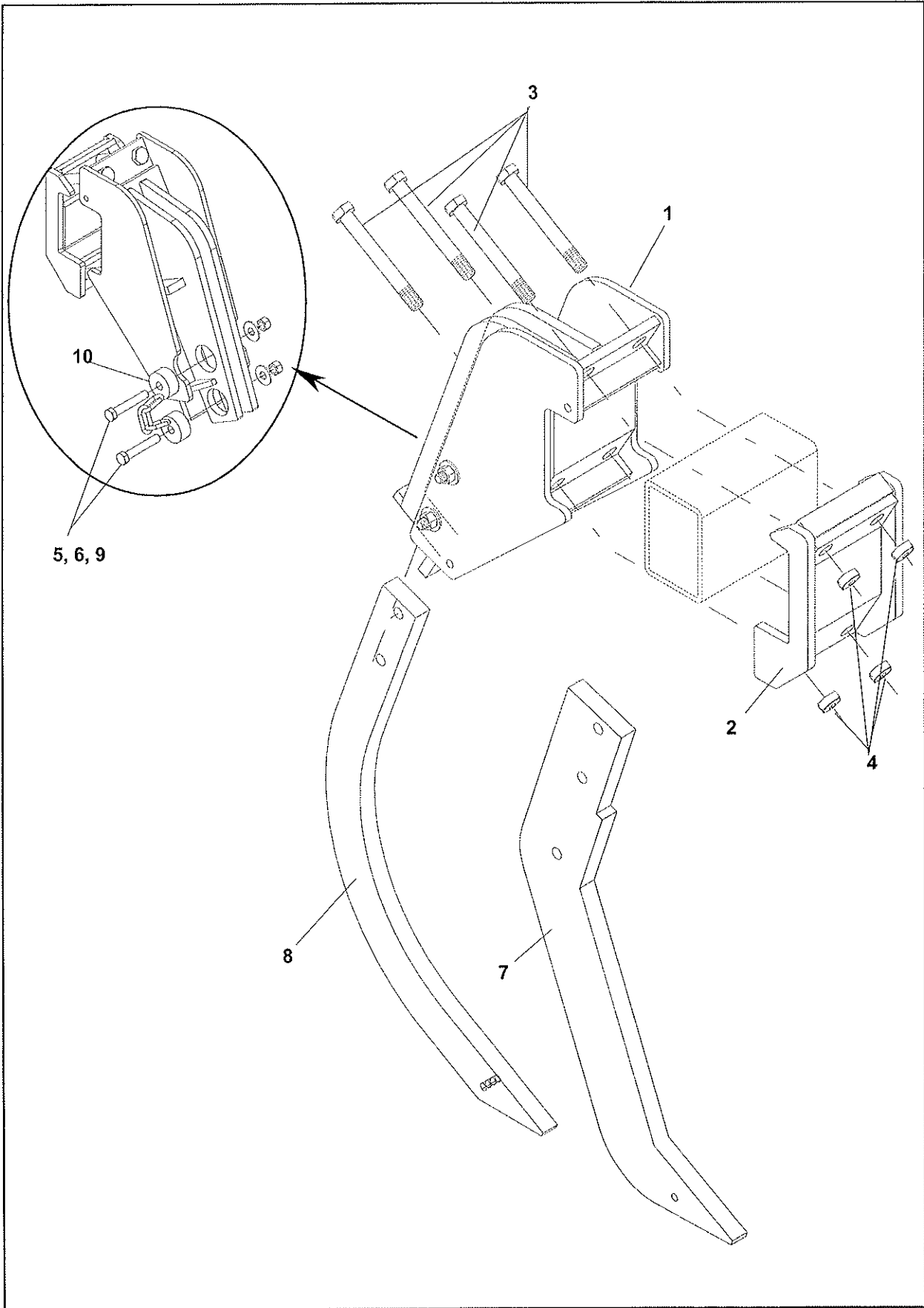
Index No.	Part No.	Description	No. Req'd per shank	Weight
-	6K795	Reset Shank Mount (items 1-29)	-	469.0
1	6K790	Front Clamp	1	29.0
2	4K463	Capscrew, 1-8 NC x 8" Long G. 5	4	-
3	6D306	Lock Nut, 1-8 NC Hex Stover	4	-
4	6K883	Decal, Warning-Shank Under Load	2	-
*	6K791	Shank Mount Assembly (items 6-29)	-	405.0
6	7K575	Shank Mount (items 6, 7)	1	125.0
7	6K753	Bushing	1	
8	6K761	Pivot, L.H.	1	15.0
9	6K762	Pivot, R.H.	1	15.0
10	6K768	Pipe	1	.6
11	6K769	Capscrew, 3/4-NC x 8 1/2" Gr. 5	4	
12	6C729	Lock Nut, 3/4-10NC Hex Stover	7	.12
13	6K770	Shank Clamp	1	68.0
14	6K775	Pivot Bolt	2	6.0
15	9D923	Grease Zerk	4	-
16	7D795	Flat Washer, 1 1/2" SAE	2	-
17	7K635	Plug Assembly (after March, 2002)	1	
18	3K786	HHCS, 3/4-10NC x 4 1/2" Gr5/zp	2	
	4K002	Cap Screw, 3/4-16 NF x 4" Gr. 8 (Prior to March, 2002)	2	-
19	1C133	Flat Washer, 3/4" Std./zp		
20	6K778	Spring Assembly (items 21-29)	1	164.0
21	6K779	Spring Bracket	1	18.0
22	6K780	Spring Rod	2	12.9
23	8J852	Lock Nut, 1 1/8-12 NF	2	-
24	6K781	Pipe	2	6.6
25	6K751	Spring	2	38.0
26	6K782	Trunion Bracket	1	3.0
27	6K783	Plate	1	2.75
28	2J716	Slotted Nut, 1 1/2-6 Hex	4	-
29	6D049	Cotter Pin, 1/4" x 2 1/2"	4	-
30	6C729	Lock Nut, 3/4-10NC Hex Stover	7	
	6D918	Lock Nut, 3/4-16NF Gr. C (Prior to March, 2002)	2	
31	6K793	Straight Shank	1	64.0
32	6K796	Wear Strip Bracket	1	1.3
33	6D742	Cap Screw, 3/4-10 NC x 3" Gr. 5	1	-
34	3K573	Parabolic Shank	1	43.3
35	6D918	Lock Nut, 3/4-16NF Gr. C	2	-
36	6K767	Bushing	2	.19



AUTO-RESET SHANK ASSEMBLY (after May, 2003)				
Index No.	Part No.	Description	No. Req'd per shank	Weight
-	6K791	Shank Mount Assembly (items 1-37)	-	450.5
1	8K365	Shank Mount, Auto reset	-	125.0
2	8K625	Pivot Assembly, L.H.	1	20.85
2a	8K621	Spring Bushing	2	
3	8K626	Pivot, Assembly, R.H.	1	20.85
4	6K769	Capscrew, 3/4-NC x 8 1/2" Gr. 5	4	
5	6C729	Lock Nut, 3/4-10NC Hex Stover	7	
6	6K770	Shank Clamp	1	68.0
7	7K861	Pivot Weld	1	
8	6K778	Spring Assembly (items 9-17)	1	164.0
9	6K779	Spring Bracket (w/ 8K460 spring bushings)	1	18.0
10	6K780	Spring Rod	2	12.9
11	8J852	Lock Nut, 1 1/8-12 NF, Gr. B, ZP	2	-
12	6K781	Pipe	1	6.6
13	6K751	Spring	2	38.0
	8K627	Trunion Assembly (items 14, 14a)	1	28.67
14	8K619	Trunion Bracket	1	28.22
14a	8K620	Inner Ring	2	.23
15	6K783	Plate	1	2.75
16	2J716	Slotted Nut, 1 1/2-6 Hex	3	-
17	6D049	Cotter Pin, 1/4" x 2 1/2"	3	-
18	9D923	Grease Zerk	1	-
19	6K775	Pivot Bolt	1	6.0
20	7D795	Flat Washer, 1 1/2" SAE	2	-
21	6K768	Pipe	1	.6
22	8K367	Plug Assembly	1	
23	8K364	Bushing	1	
24	6D037	HHCS, 5/16-18 NC x 1" Gr. 5, ZP	2	
25	8D922	HHCS, 1-8 NC x 4 1/2", Gr. 5, ZP	1	
26	2D488	HHCS, 3/4 -10 NC x 5", Gr. 5, ZP	1	
27	6D918	Nut, Lock, 3/4-10 NC, Gr. B, ZP	1	
28	6D306	Lock Nut, 1-8 NC Hex Stover	1	-
29	3C127	Flat Washer, 5/16 STD, ZP	2	
30	2C458	Flat Washer, 3/4 SAE, ZP	1	
31	1C182	Flat Washer, 3/8 Std., ZP	1	
32	9C078	HHCS, 3/8-16 NC x 1 1/4", Gr. 5, ZP	1	
33	1C183	Lock Washer, 3/8" ZP	1	
34	1C362	Lock Washer, 5/16", ZP	2	
35	1C787	Flat Washer, 1.0 STD, ZP	2	
36	7D919	Lock Washer, 1" , ZP	2	
37	8K369	HHCS, 1-8 NC x 2", Gr. 5, ZP	2	
38	8K370	Straight Shank	1	64.0
39	3K573	Parabolic Shank	1	43.3
40	6K883	Decal, Warning-Shank Under Load	2	-
41	6K790	Front Clamp	1	29.0
42	4K463	Capscrew, 1-8 NC x 8" Long G. 5	4	-
43	8K801	Narrow Shank Leg	1	53.7
44	9K129	Decal, Caution-Grade 2 Bolt	1	--

**** Note:** As a result of a weldments-to-casting conversion, the trunion bracket casting will not be interchangeable with its welded counterpart. Therefore, the trunion casting and the trunion/wear sleeve assembly have been given different part numbers. Those castings which are directly interchangeable with their welded counterpart have kept the same number as the weldments. Therefore:

If you order:	You will receive
(1) 6K782-Welded Trunion Brkt.	(1) 8K627-Trunion Asm, (1) 8K625-Pivot Asm, (1) 8K626-Pivot Asm.
(1) 6K761-Pivot Brkt.	(1) 8K627-Trunion Asm, (1) 8K625-Pivot Asm, (1) 8K626-Pivot Asm.
(1) 6K762-Pivot Brkt.	(1) 8K627-Trunion Asm, (1) 8K625-Pivot Asm, (1) 8K626-Pivot Asm.
(1) 8K619-Cast Trunion Brkt.	(1) 8K627-Trunion Asm, which includes (2) 8K620 sleeves

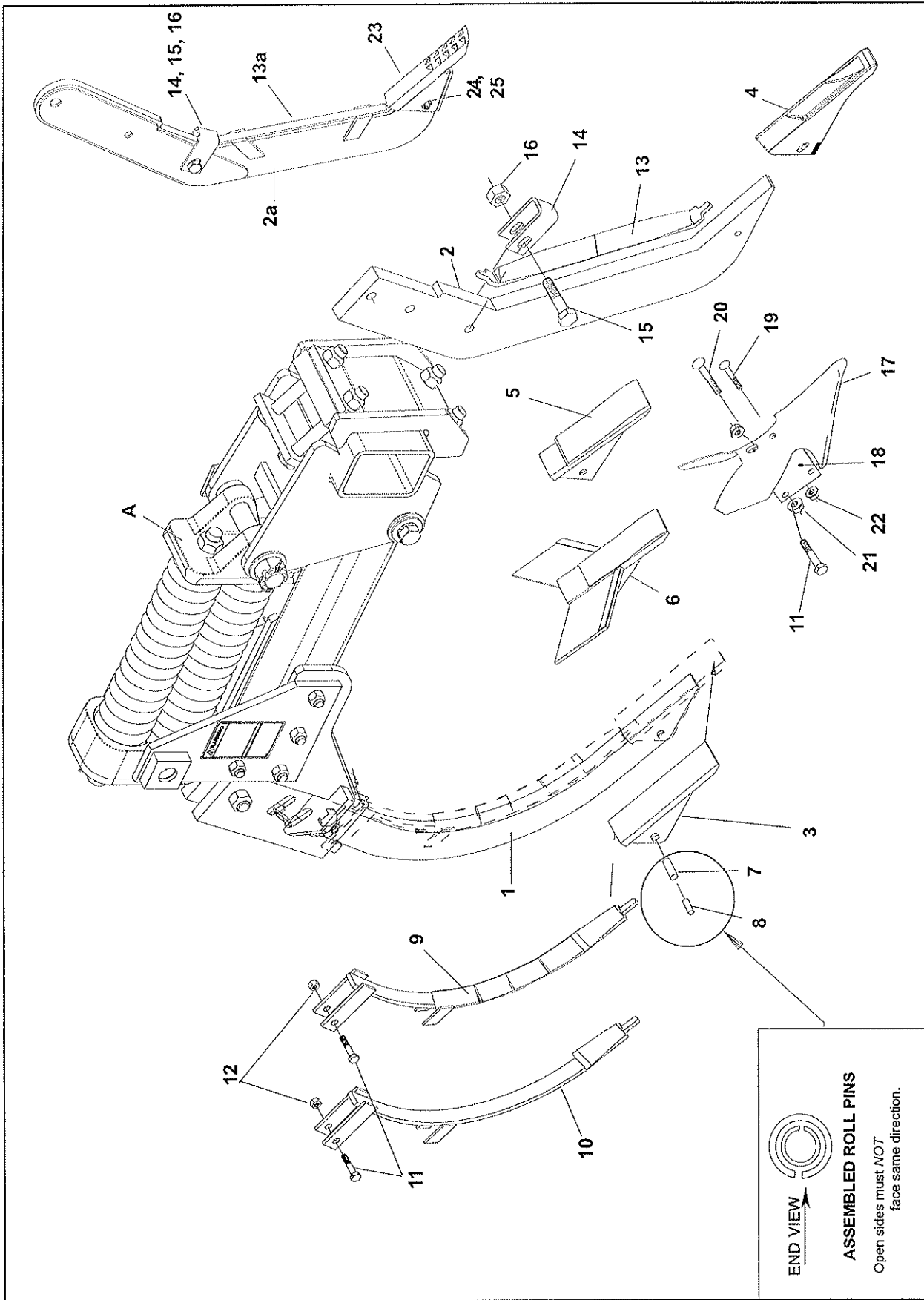


SHEAR BOLT SHANK ASSEMBLY(prior to January 20, 2003)

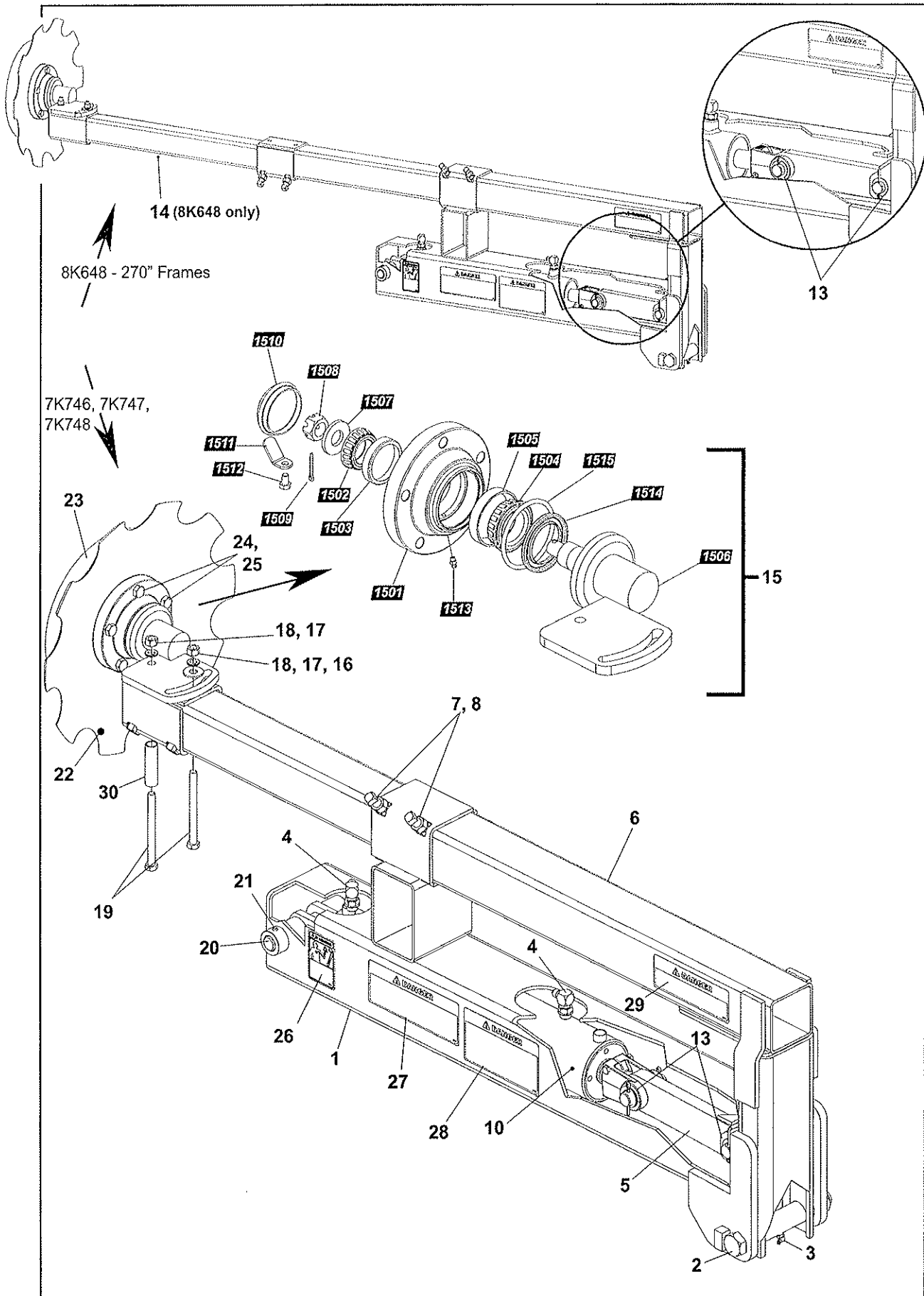
Index No.	Part No.	Description	No. Req'd.	Weight
-	7K657			
1	6K807	Rigid Shank Mount	1	156.57
	7K634	Bracket	1	140.0
	6K803	Bracket (prior to March 27, 2002)	1	140.0
2	6K790	Front Clamp	1	29.0
3	4K463	Cap Screw, 1-8 NC x 8" Long Gr. 5	4	-
4	6D306	Lock Nut, 1-8 NC Hex Stover	4	-
5	3K786	HHCS, 3/4-10 NC x 4 1/2" Gr. 5 /zp		
	4K002	Cap Screw, 3/4-16 NF x 4" Gr. 8 (prior to March 27, 2002)	2	-
6	6C729	Lock Nut, 3/4-10 NC Grade B	2	-
	6D918	Lock Nut, 3/4-16 NF Grade C (prior to March 27, 2002)	2	-
7	6K793	Straight Shank	1	64.0
8	3K573	Parabolic Shank	1	43.3
9	1C133	Flat Washer, 3/4" Std./zp	2	
10	7K635	Plug Assembly (after March, 2002)	1	

SHEAR BOLT SHANK ASSEMBLY (after January 20, 2003)

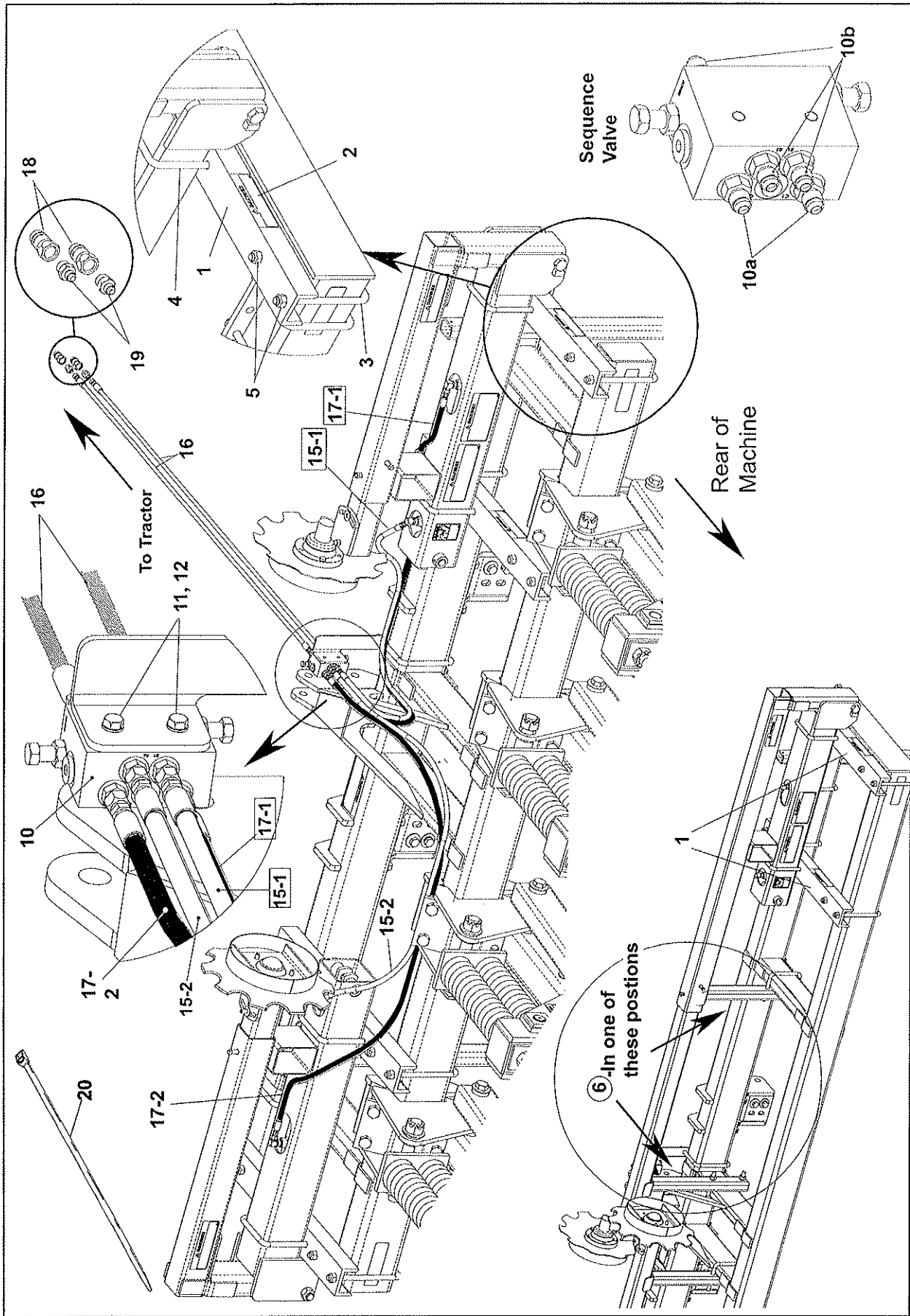
Index No.	Part No.	Description	No. Req'd.	Weight
	7K657	Bracket Assembly		194.4
1	8K373	Bracket	1	140.0
2	6K790	Front Clamp	1	29.0
3	4K463	Cap Screw, 1-8 NC x 8" Long Gr. 5	4	-
4	6D306	Lock Nut, 1-8 NC Hex Stover	4	-
5	8K367	Plug Assembly	1	
6	8K364	Bushing	1	
7	6D037	HHCS, 5/16-18 x 1" Gr. 5, ZP	2	
8	8D922	HHCS, 1-8 NC x 4 1/2", Gr. 5, ZP	1	
9	2D488	HHCS, 3/4 -10 NC x 5", Gr. 5, ZP	1	
10	6C729	Nut, Lock, 3/4-10 NC, Gr. B, ZP	1	
11	6D306	Lock Nut, 1-8 NC Hex Stover	1	-
12	3C127	Flat Washer, 5/16 STD, ZP	2	
13	2C458	Flat Washer, 3/4 SAE, ZP	1	
14	1C182	Flat Washer, 3/8 Std., ZP	1	
15	9C078	HHCS, 3/8-16 NC x 1 1/4", Gr. 5, ZP	1	
16	1C183	Lock Washer, 3/8" ZP	1	
17	1C362	Lock Washer, 5/16", ZP	2	
18	8K370	Straight Shank	1	64.0
19	3K573	Parabolic Shank	1	43.3
20	8K801	Narrow Shank Leg	1	53.7
21	9K129	Decal, Caution-Grade 2 Bolt	1	--



POINT & WEARSTRIP OPTIONS			
Index No.	Part No.	Description	Weight
A	6K791	Shank Assembly - (shown: Auto Reset w/ Parabolic Shank)	469.0
1	3K573	Parabolic Shank	43.3
2	8K370	Straight Shank	64.0
2a	8K801	Narrow Straight Shank (3/4")	38.0
3	3K820	2-1/2" Flat Point [3K806] w/ Hdw.	6.5
4	6K853	V-Cast Steel Point [6K852] w/ Hdw.	13.4
	7K673	V-Cast Steel Point [7K548] w/Hdw. (for 3/4" shank)	14.5
5	7K365	2 1/2" Flat Steel Point [7K362] w/ Hardware	10.6
6	7K366	7" Winged Alloy Point [7K363] w/ Hdw.	15.9
7	6D854	Roll Pin, 1/2 x 2"	-
8	4C858	Roll Pin, 5/16 x 2" Plated	-
9	3K580	V-Shaped Alloy Wearstrip [3K579] w/ Hdw. - Items 9, 11, 12	9.00
10	6K587	Flat Wearstrip [6K586] w/ Hdw. (for Parabolic Shank w/ Coverboard - Items 10, 11, 12)	6.00
11	7C875	Capscrew - 1/2-13NC x 2 1/2"	.17
12	5C392	Stover Nut - 1/2-13NC Hex	.04
13	6K797	Reversible Wearstrip for straight shank [6K797=8K641+hdw.14-16]	10.0
13a	7K669	Wearstrip - Narrow (3/4") straight shank [6K669 = 7K797 + hdw]	5.9
14	6K796	Wearstrip Bracket	1.3
15	6D742	Capscrew, 3/4-NC x 3" Gr. 5	-
16	6C729	Lock Nut, 3/4-10NC Hex Stover	-
-	2K118	Cover Board Kit (Items 17-22 & 11) for Parabolic Shank only	9.50 Use with Flat Wearstrip
17	6K478	Furrower for Coverboard	
18	6K477	Coverboard bracket	4.4
19	6C347	Carriage Bolt, 1/2-13NC x 1 1/4"	
20	5J425	Plow Bolt, 7/16-14NC x 1 1/4" #3 Hd.	
21	4K551	Self-Locking Flange Nut, 7/16-14NC Gr. F Plated	-
22	4K552	Self-Locking Flange Nut, 1/2-13NC Gr. F Plated	-
23	9K070	Rib Point for Narrow (3/4") Shank (9K070 + 2J600, 9K077 = 9K076)	
24	2J600	Roll Pin, 5/16 x 1 1/2"	
25	9K077	Roll Pin,	

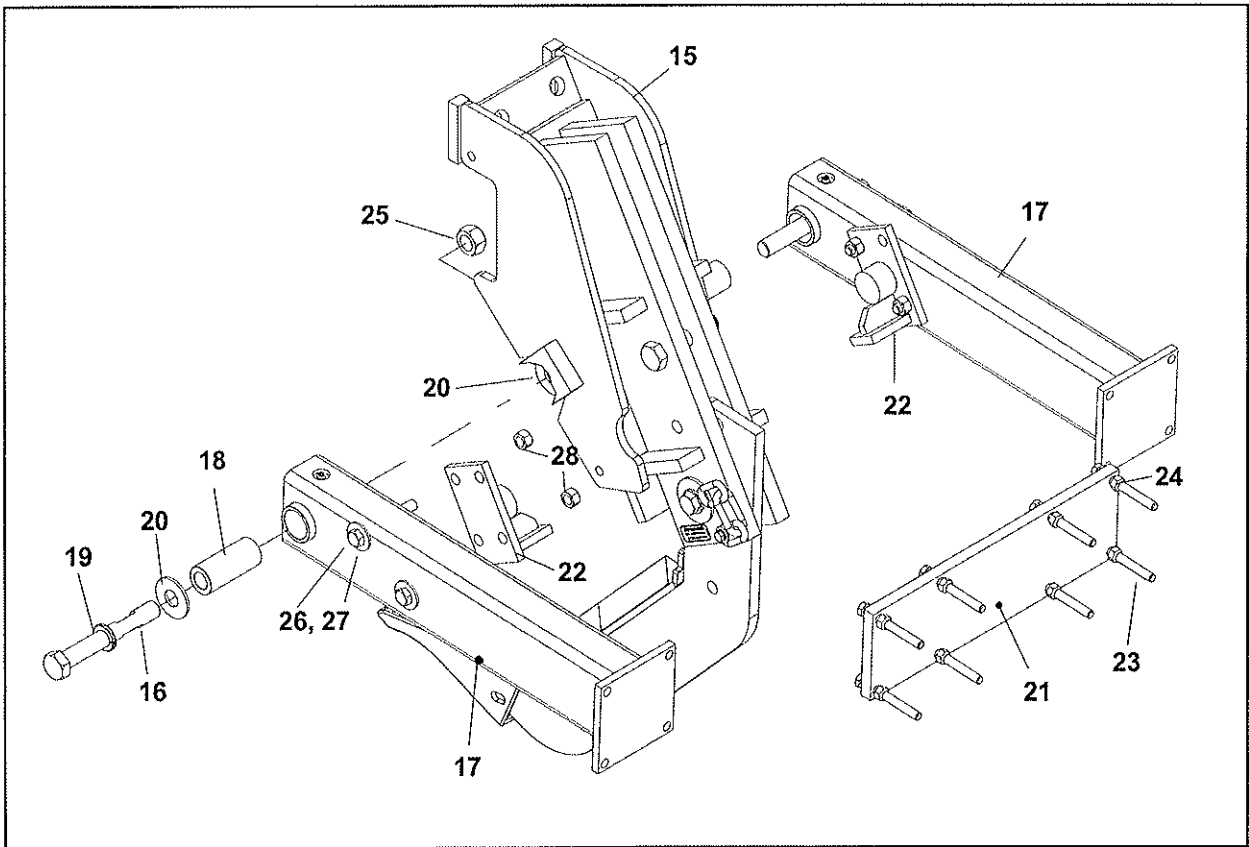
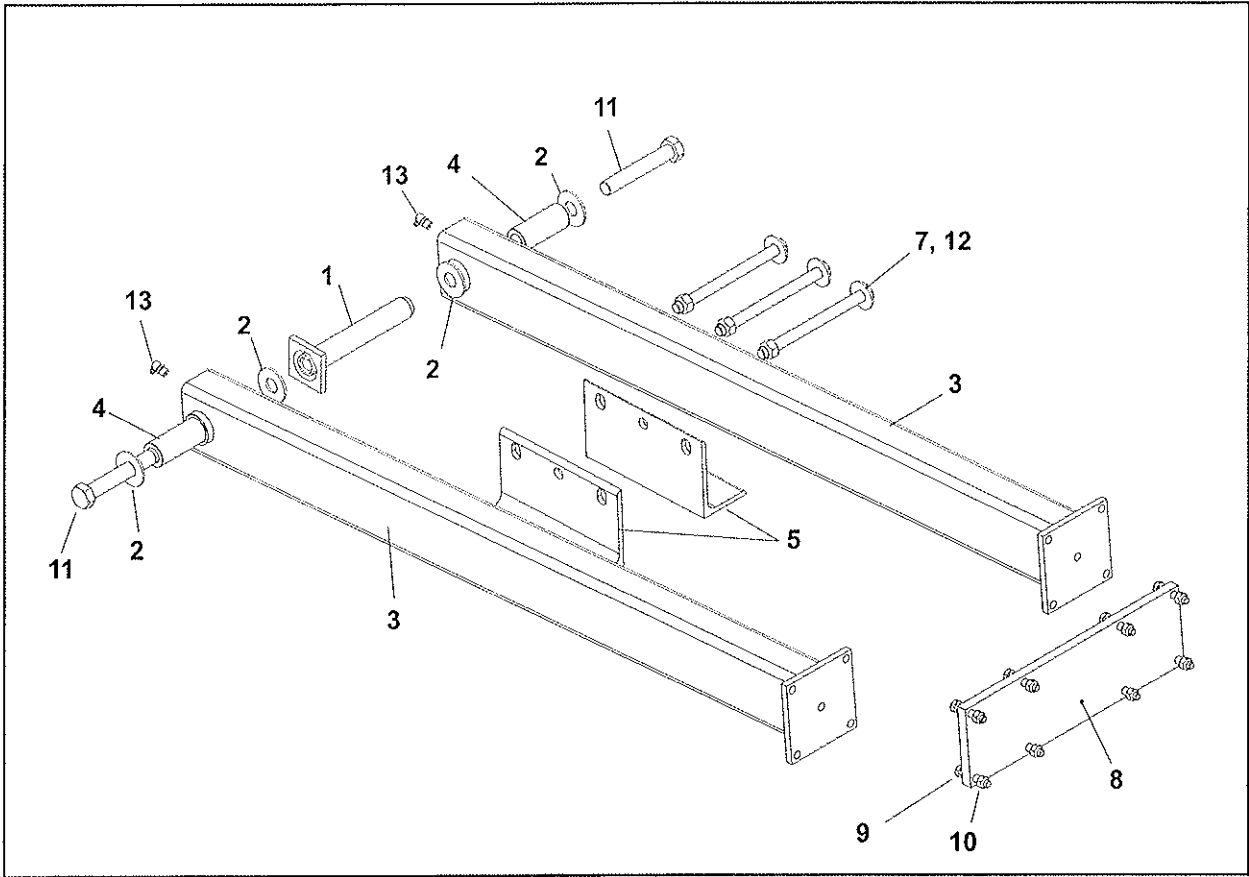


ROW MARKER OPTION				
Index No.	Part No.	Description	No. Req'd.	Wt
-	7K746	Row Marker Assembly 138", 150", 210" Frames	2	
-	7K747	Row Marker Assembly, 168" Frames	2	
-	7K748	Row Marker Assembly, 228" Frames	2	
-	8K468	Row Marker Assembly, 270" Frames	2	
			No. / Asm.	
1	7K711	Row Marker Frame Weldment	1	
2	8K096	HHCS, 1-8 NC x 8 1/2" Gr. 5, zp	1	
3	6D306	Lock Nut, 1-8 NC Gr B, zp	1	
4	7K719	Elbow, .06MJ x .08MOR x 90°	2	
5	7K721	Link	1	
6	7K726	Row Marker Arm Weldment, (frames-138", 150", 210" 168" 270")	1	
	7K727	Row Marker Arm Weldment, (for 228" frame)		
7	1C392	Nut, 5/8-11 NC Hex Jam, zp	2	
8	3J358	Set Screw, 5/8-11 NC x 2", zp	2	
9	3C491	Grease Fitting, 1/8 PTF x 90°	1	
10	6K843	Hydraulic Cylinder, 3 1/2" x 16 DA	1	
11	3K120	Pin	1	
12	6C468	Cotter Pin, 3/16" x 2", zp	2	
13	7C076	Machinery Bushing, 1" x 1 1/2" x 14ga.	4	
14	7K725	Extension Tube, 68" (128" & 228" frames)	1	
	8K467	Extension Tube, 46" w/ wld nut (138", 150", 210", 270" frames)		
	8K466	Extension Tube - 2nd extension (270" frames)		
15	7K737	Row Marker Disc Assembly (Items 1501 thru 1515)	1	
1501	3K612	Hub	1	
1502	5C913	Bearing Cone, Timken LM67048	1	
1503	5C914	Bearing Cup, Timken LM67010	1	
1504	7C763	Bearing Cone, Timken LM501349	1	
1505	7C762	Bearing Cup, Timken LM501310	1	
1506	7K738	Pivot, Row Marker Disc Wld	1	
1507	3J397	Washer, 3/4" x 1 3/4" x 3/16", zp	1	
1508	3C173	Nut, 3/4-16 NC Hex Slotted, zp	1	
1509	3C350	Cotter, 5/32" x 1", zp	1	
1510	6D337	Hub Cap	1	
1511	3K613	Cap Strap	1	
1512	8C175	HHCS, 5/16-18 NC x 1/2" Gr. 2, zp	1	
1513	7C414	Grease Fitting, 1/4-28 Taper	1	
1514	4J565	Seal, Single Lip	1	
1515	3K614	O-Ring	1	
16	1C120	Flat Washer, 1/2" Std., zp	1	
17	1C109	Lock Washer, 1/2", zp	2	
18	1C390	Nut, 1/2-13 NC Hex, zp	2	
19	1C266	HHCS, 1/2-13 NC x 5 1/2" Gr. 5, zp -(138", 150", 168", 210", 228" frames)	2	
	3D751	HHCS, 1/2-13 NC x 4 1/2" Gr. 5, zp -(270" frame)	2	
20	6J778	Pin	1	
21	4C858	Roll Pin, 5/16" x 2". zp	1	
22	6K153	Notched Disc, 18"	1	
23	7K887	Depth Band	1	
24	1D237	HHCS, 1/2-13 NC x 2" Gr. 5, zp	5	
25	5C392	Lock Nut, 1/2-13 NC Gr. B, zp	5	
26	3K706	Decal, Hydraulic Leak Warning	1	
27	3J678	Decal, Danger-Bleed air from wing cylinders	1	
28	9J629	Decal, Danger-Overhead electrical wires	1	
29	3J675	Decal, Danger-Falling wings		
30	9K382	Spacer, 0.84" OD .109 Wall x 2 9/16 Long (used w/ 8K468)	1	
	9K383	Spacer, 0.84" OD .109 Wall x 3 1/16 Long (used w/ others)	1	



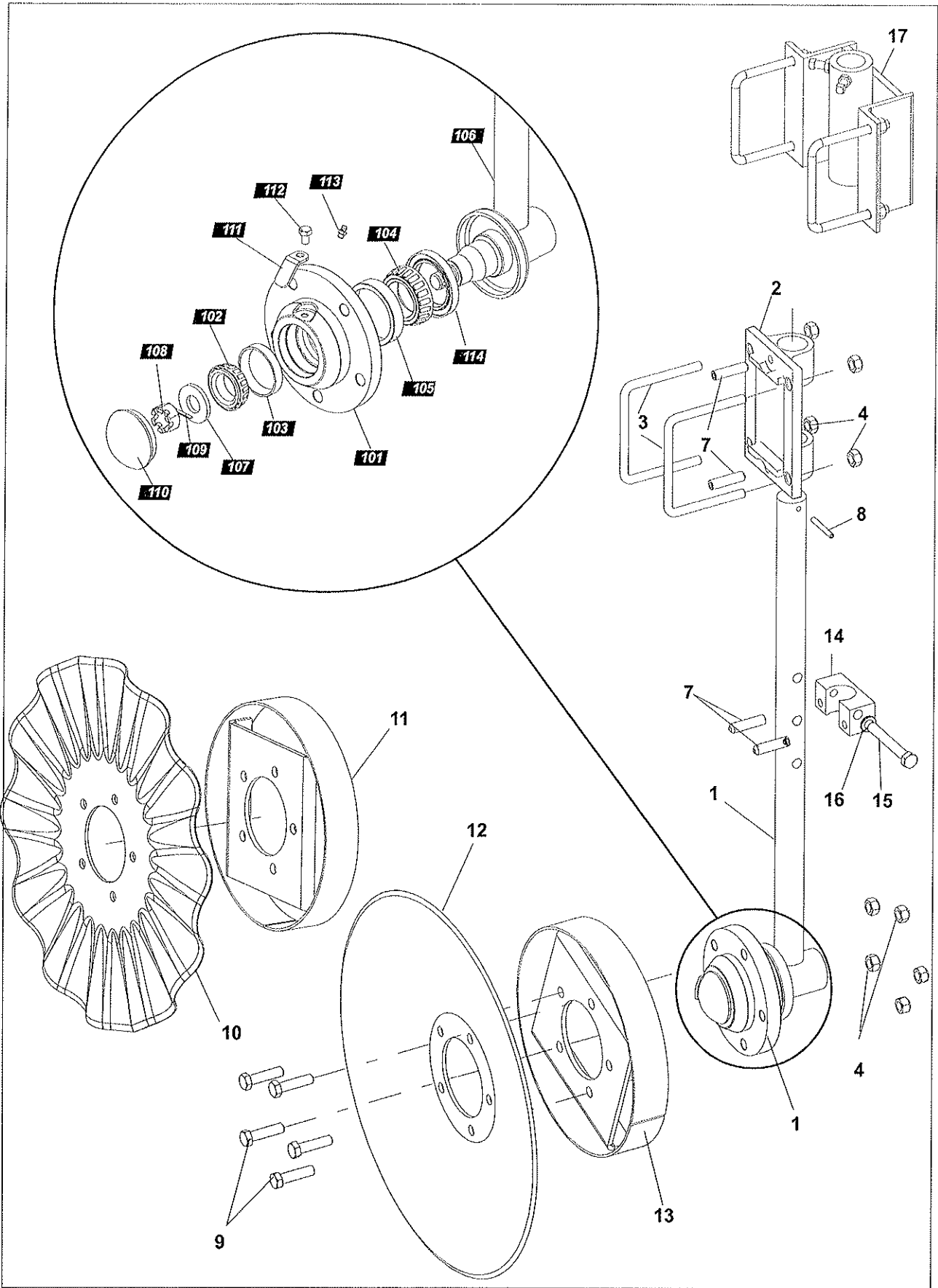
ROW MARKER MOUNTING & HYDRAULICS

Index No.	Part No.	Description	No. Req'd.	Weight
1	7K720	Mounting Channel	4	
2	3J675	Decal, Stand Clear	8	
3	7K722	U-bolt, 3/4-10 NC x 5 13/16" x 10 1/2"	8	
4	7K723	U-bolt, 3/4-10 NC x 6 13/16" x 7 5/8"	4	
5	6C729	Lock Nut, 3/4-10NC	24	
6	7K743	Arm Cradle (168" & 228" Frames only)	2	
7	3J450	U-bolt, 3/4-10 NC x 6 13/16" x 5 3/4"	2	
8	1C211	Lock Washer, 3/4"	6	
9	1C210	Nut, 3/4-10 NC Hex	6	
	1C120	Nut, 3/4-10 NC Hex	4	
10	7K705	Sequence Valve (Repair Parts 10a-10e)		
10-a	7K773	C1 & C2 Port Adapter		
10-b	7K774	Other ports Adapter		
10-c	7K770	Spool [not shown]		
10-d	7K771	Seal Kit [not shown]		
10-e	7K772	Needle Asm. [not shown]		
11	1C183	Lock Washer, 3/8"	2	
12	6C379	HHCS, 3/8-16 NC x 7/8"	2	
13	7K759	Valve Mount	1	
14	3K176	U-bolt, 3/4-10 NC x 7 13/16" x 6 3/4"	1	
15	7K761	Hose Assembly, 1/4" x 68" Long (138" & 150" Frames)	2	
	7K762	Hose Assembly, 1/4" x 84" Long (168" Frame)	2	
	8K473	Hose Assembly, 1/4" x 105" Long (210" Frame)	2	
	7K764	Hose Assembly, 1/4" x 120" Long (228" Frame)	2	
	8K474	Hose Assembly, 1/4" x 141" Long (270" Frame)	2	
16	7K766	Hose Assembly, 1/4" x 240" Long (Pull Type)	2	
	7K767	Hose Assembly, 1/4" x 72" Long (3 Point Hitch)	2	
17	7K762	Hose Assembly, 1/4" x 84" Long (138" * 150" Frames)	2	
	7K763	Hose Assembly, 1/4" x 100" Long (168" Frame)	2	
	7K764	Hose Assembly, 1/4" x 120" Long (210" Frame)	2	
	7K765	Hose Assembly, 1/4" x 136" Long (228" Frame)	2	
	8K475	Hose Assembly, 1/4" x 157" Long (270" Frame)	2	
18	4K912	Male Tractor Tip	2	
19	7K708	Adapter, .06 Male JIC x .08 Male O-Ring	2	
20	7K678	Cable Tie, 32" Long	10	
	9D674	Cable Tie, 8 1/2" Long	10	



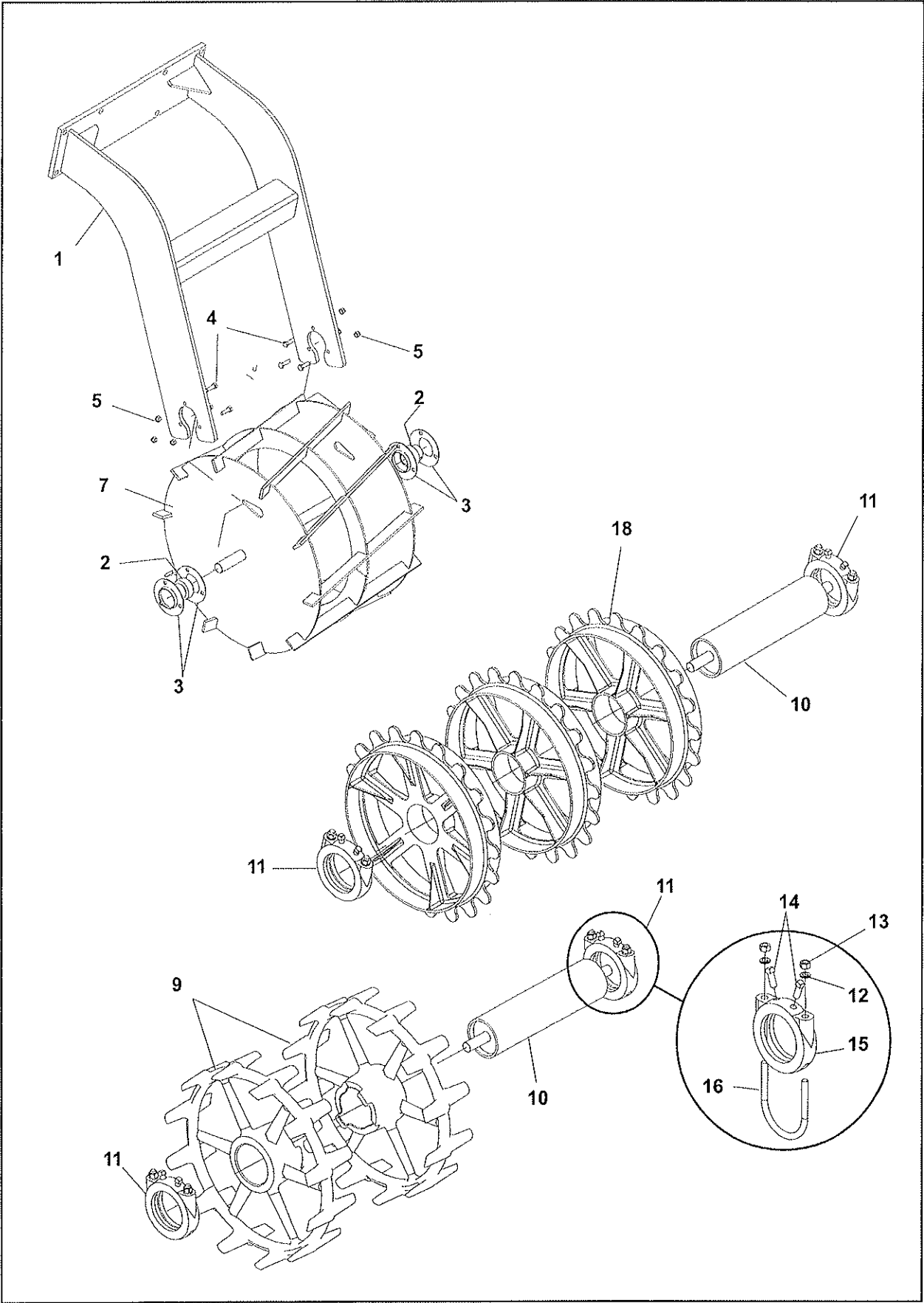
#7K872 SUPPORT ARM KIT				
Index No.	Part No.	Description	No. Req'd	Weight
1	7K861	Pivot Weldment	1	4.0
2	1C787	Flat Washer, 1" Std. zp	4	.20
3	7K856	Arm Welment	2	64.90
4	7K857	Sleeve	2	1.80
5	9K160	Support Arm	2	11.45
6	--	---	--	-
7	8J343	HHCS, 3/4-10 NC x 9 1/2" Gr. 5 zp	3	1.33
8	7K863	Plate	1	25.05
9	7C875	HHCS, 1/2-13 NC x 2 1/2" Gr. 5 zp	8	.18
10	5C392	Lock Nut, 1/2-13 NC gr B zp	8	.04
11	6D528	HHCS, 1-8 NC x 6" Gr. 5 zp	2	1.67
12	3K361	Flanged Lock Nut, 3/4-10 NC Gr. B zp	3	.13
13	3C491	Grease Fitting, 1/8PTF x 65o x 3/4"	2	.004
14	7K946	Instruction Sheet	1	-

#7K953 SUPPORT ARM KIT (Rigid Shanks)				
Index No.	Part No.	No. Req'd	Description	Weight
15	7K657	1	Bracket Assembly	194.8
16	6K294	2	HHCS, 1-8 NC x 7 1/2" Gr. 5, zp	2.0
17	7K952	2	Arm Welment	42.5
18	7K857	2	Sleeve	1.8
19	7D919	2	Lock Washer, 1.0 Std., zp09
20	1C787	4	Flat Washer, 1" Std. zp2
21	7K863	1	Plate	25.0
22	9K061	2	Stop	
23	3D751	8	HHCS, 1/2-13 NC x 4 1/2" Gr. 5, zp	
24	5C392	8	Lock Nut, 1/2-13 NC gr B zp04
25	6D306	8	Lock Nut, 1-8 NC Gr. 5., zp3
26	8D084	4	HHCS, 5/8-11 NC x 4 1/2" Gr. 5, zp	
27	1C122	4	Flat Washer, 5/8" STD., zp	
28	5C461	4	Lock Nut, 5/8-11 NC, Gr. B, zp	
29	7K954	1	Instruction Sheet	-

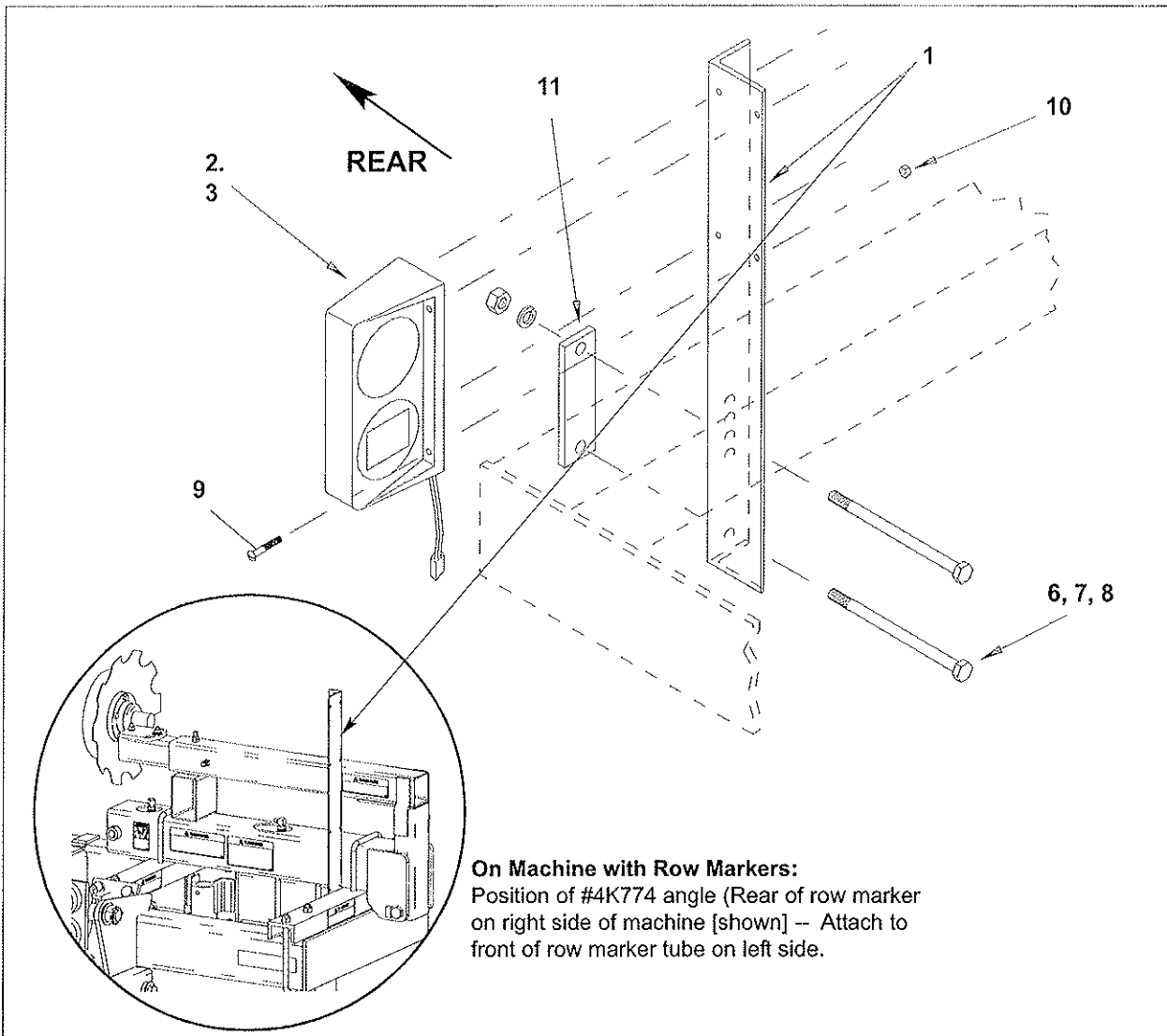


COULTER & DISC KITS

Index No.	Part No.	Description	No. Req'd.	Weight
-	7K873	Fluted Coulter Kit (items 1-11, 14-16)		66.271
-	7K928	20" Disc Kit (Items 1-9 and 12-16)		68.291
1	9K465	Hub & Spindle Assembly	1	30.482
101	9K453	Hub	1	
102	5C913	Bearing Cone, Timken LM67048	1	
103	5C914	Bearing Cup, Timken LM67010	1	
104	7C763	Bearing Cone, Timken LM501349	1	
105	7C762	Bearing Cup, Timken LM501310	1	
106	9K464	Shaft & Spindle	1	
107	3J397	Washer, 3/4" x 1 3/4" x 3/16", zp	1	
108	3C173	Nut, 3/4-16 NC Hex Slotted, zp	1	
109	3C350	Cotter, 5/32" x 1", zp	1	
110	6D337	Hub Cap	1	
111	3K613	Cap Strap	1	
112	8C175	HHCS, 5/16-18 NC x 1/2" Gr. 2, zp	1	
113	7C414	Grease Fitting, 1/4-28 Taper	1	
114	9K454	Grease Seal	1	
115	--	----	--	
2	7K885	Coulter Mount Weldment.	1	
3	7K858	U-bolt, 1/2-13NC x 5 1/2" x 4 1/2", zp	2	
4	5C392	Lock Nut, 1/2-13 NC Gr. B, zp	9	
5	3D432	Set Screw, 1/2-13 NC x 1 3/4", zp	1	
6	---	-----	--	
7	9K387	Set Screw, 1/2-13 NC x 2", zp	4	
8	2D894	Roll Pin, 1/4" x 2", zp	1	
9	5D051	HHCS, 1/2-13 NC x 1 3/4" Gr. 5, zp	5	
10	7K852	Disc Coulter, 20" Wave	1	
11	7K887	Depth Band	1	
12	6K135	Disc Coulter, 20"	1	
13	7K740	Band, Disc Wld.	1	
-	9K493	Block Assembly --(2) items 7 & items 14-16	1	
14	9K060	Block	1	
15	4D345	HHCS, 1/2-13NC x 3 3/4", Gr. 5, ZP	1	
16	1C109	Lock Washer, 1/2", ZP	1	
17	8K410	Offset Bracket (used where normal placement interferes w/ mast).		



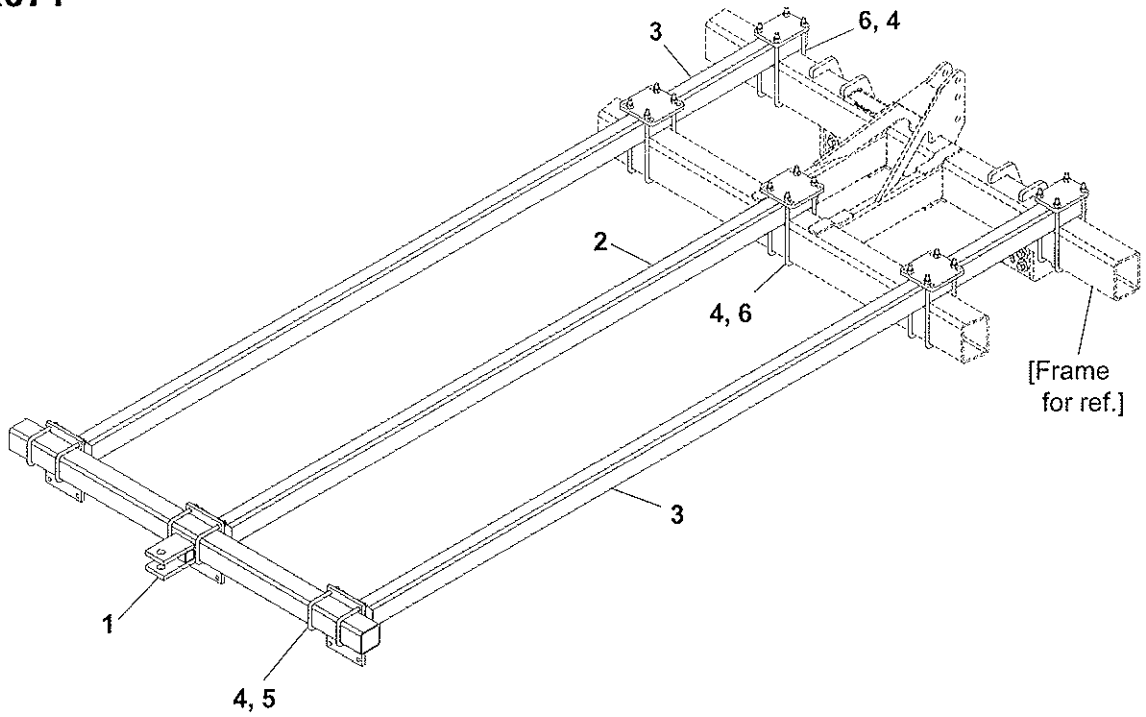
BASKET KIT(7K874) DUCTILE WHEEL KIT(7K925) or OPTIMIZER WHEEL KIT(7K924)				
Index No.	Part No.	Description	No. Req'd.	Weight
-	7K874	Basket Kit		126.835
-	7K925	Ductile Wheel Kit		182.310
-	7K924	Optimizer Wheel Kit		191.467
1	7K867	Frame	1	
2	5J337	Bearing and Collar, 3/4"	2	
3	9C601	Flangette Half	4	
4	6D037	HHCS, 5/16-18 NC x 1" Gr. 5, zp	6	
5	6C748	Lock Nut, 5/16-18 NC , zp	6	
6	---	-----	--	
7	7K880	Basket Weldment.	1	
8	7K920	Optimizer Roller	1	
9	6K352	Crumbler End Wheel, 4 1/16" Bore	2	
10	7K919	Pipe Weldment	1	
11	5J375	Axle Clamp Assembly	2	
12	1C109	Lock Washer, 1/2" Std.	2	
13	1C390	Nut, 1/2-13 NC Hex	2	
14	2D535	Set Screw, 1/2-13 NC x 1 1/4", Sq. Hd., Cup Pt.	2	
15	9C031	Axle Clamp	1	
16	9D673	U-Bolt, Round 2 1/32" radius, 1/2-13 NC x 1/12" Thrd	1	
17	7K921	Ductile Roller	1	
18	9J500	Ductile Notched End Wheel, 20"	3	



#4K974 WARNING LIGHT KIT

Index No.	Part No.	Description	No. Req'd	Weight
1	4K774	Angle	2	7.71
2	4K772	Dual Lamp, L.H.	1	1.86
3	4K773	Dual Lamp, R.H.	1	1.86
4	4K780	Wishbone Harness, 10' - (not shown)	1	1.02
5	4K781	Ag. harness, 20' - (not shown)	1	2.18
6	3C910	Machine Bolt, 1/2" x 6"	4	-
-	1J696	Machine Bolt, 1/2" x 7 1/2" (for attaching to row marker tube)	4	-
7	1C109	Lockwasher, 1/2"	4	.01
8	1C390	Hex Nut, 1/2"	4	.04
9	4K782	Machine Screw, 1/4" x 1 1/4"	8	-
10	6J150	Flange Lock Nut, 1/4"	8	.01
11	4K970	Strap	2	1.20
12	3J615	Plastic Cable Tie, 28" - (not shown)	12	-
13	4K940	Instruction Sheet	1	-

9K071



9K071: 3-POINT REAR RIGID HITCH KIT

Index No.	Part No.	Qty. Req'd.	Description	Weight
1	9K072	1	Two Bar Welded Hitch	
2	9K073	1	Center Arm	
3	9K067	2	Outer Arm	
4	5C461	32	Lock Nut, 5/8-11 NC, Gr. B, ZP	
5	9D989	6	U-bolt, 5/8-11 NC x 4 11/16" x 5 5/8", ZP	
6	9K079	10	U-bolt, 5/8-11 NC x 5 11/16" x 13", ZP	

Index

Part No.	Page No.	Index No.	Part No.	Page No.	Index No.	Part No.	Page No.	Index No.
B			2C458	9b	30	6C468	15	12
1B166	3	27	2C458	11b	13	6C468	25	19
1B166	7	18	3C127	9b	29	6C729	3b	11
C			3C127	11b	12	6C729	7b	22
1C109	5	34	3C173	7	11	6C729	7d	24
1C109	15	17	3C173	15	15-8	6C729	9	12
1C109	21	16	3C173	21	1-8	6C729	9	30
1C109	23	12	3C335	7d	32	6C729	9b	6
1C120	15	16	3C350	7	12	6C729	11	6
1C120	17	9	3C350	15	15-9	6C729	11b	10
1C133	9	19	3C350	21	1-9	6C729	13	16
1C133	11	9	3C491	19	13	6C729	17	5
1C182	9b	31	3C491	19	22	6C748	25	22
1C182	11b	14	4C839	5	30	7C076	15	13
1C183	9b	33	4C856	7d	33	7C414	5	10
1C183	11b	16	4C858	13	8	7C414	15	15-13
1C183	17	11	4C858	15	21	7C414	21	1-13
1C210	3	9	5C077	3	4	7C762	15	15-5
1C210	3	32	5C077	3b	6	7C762	21	1-5
1C210	3b	23	5C100	7	16	7C763	15	15-4
1C210	5	2	5C100	7b	17	7C763	21	1-4
1C210	17	9	5C392	3	34	7C875	19	9
1C211	3	8	5C392	7	23	8C175	15	15-12
1C211	3	31	5C392	7b	19	8C175	21	1-12
1C211	3b	20	5C392	7d	9	8C381	7d	6
1C211	5	1	5C392	13	12	8C528	3	33
1C211	17	8	5C392	15	25	8C528	7	22
1C362	9b	34	5C392	19	10	8C882	7	17
1C362	11b	17	5C392	19	24	9C031	23	15
1C362	23	6	5C392	21	4	9C078	9b	32
1C385	23	5	5C461	7d	27	9C078	11b	15
1C390	5	35	5C479	7	7	9C121	15	9
1C390	15	18	5C479	7b	14	9C223	25	3
1C390	23	13	5C480	7	6	9C601	23	3
1C392	3	28	5C480	7b	15	D		
1C392	5	3	5C480	7b	15	1D237	15	24
1C392	7	19	5C651	5	29	1D237	21	9
1C393	15	7	5C911	7	9	1D273	7	5
1C393	21	6	5C912	7	10	1D424	3b	10
1C659	5	31	5C913	5	26	2D488	9b	26
1C714	3	6	5C913	7b	12	2D488	11b	9
1C714	3b	8	5C913	15	15-2	2D535	15	8
1C737	7d	39	5C913	15	1-2	2D535	23	14
1C787	9b	35	5C914	5	27	2D894	7d	8
1C787	19	2	5C914	7b	13	2D894	21	8
1C787	19	20	5C914	15	15-3	3D432	21	5
1C788	7b	11	5C914	21	1-3	3D751	15	19
1C869	5	17	6C347	13	19			
1C871	7b	8	6C379	17	12			
			6C406	5	18			
			6C461	24A	4			
			6C468	7d	37			
			6C468	7f	11			

Part No.	Page No.	Index No.	Part No.	Page No.	Index No.	Part No.	Page No.	Index No.
3K357	5	15	6K276	7d	42	6K800	3b	25
3K358	5	16	6K284	7d	7	6K803	11	1
3K359	5	22	6K294	7b	4	6K807	11	-
3K360	5	23	6K294	19	16	6K843	15	10
3K361	5	24	6K352	23	9	6K853	13	4
	19	12	6K477	13	18	6K857	5	---
3K362	5	25	6K478	13	17	6K875	13	11
3K363	5	28	6K587	13	10	6K883	9	4
3K573	9	34	6K675	3b	1	6K883	9b	40
3K573	9b	38	6K678	3	17	6K922	7b	28
3K573	11	8	6K678	5	8	6K932	7d	13
3K573	11b	19	6K689	3b	27	6K950	3	24
3K573	13	1	6K742	13	15	7K256	25	2
3K580	13	9	6K751	9	25	7K257	25	9
3K612	15	15-1	6K751	9b	13	7K258	25	17
3K612	21	1-1	6K753	9	7	7K259	25	13
3K613	15	15-11	6K761	9	8	7K260	25	*
3K613	21	1-11	6K762	9	9	7K263	3b	26
3K614	15	15-15	6K767	9	36	7K286	7b	2
3K614	21	1-15	6K768	9	10	7K365	13	5
3K706	15	26	6K768	9b	21	7K366	13	6
3K770	5	4	6K769	9	11	7K431	3b	1
3K777	7	1	6K769	9b	5	7K511	7b	5
3K786	3b	19	6K770	9	13	7K512	7b	6
3K786	9	18	6K770	9b	7	7K575	9	6
3K786	11	5	6K775	9	14	7K634	11	1
3K788	7	21	6K775	9b	19	7K635	9	17
3K789	5	-	6K778	9	20	7K635	11	10
3K800	3b	28	6K778	9b	9	7K657	11	-
3K802	3	29	6K779	9	21	7K657	11b	-
3K813	3b	-	6K779	9b	10	7K657	19	15
3K814	3	*	6K780	9	22	7K678	7f	7
3K820	13	3	6K780	9b	11	7K678	17	20
4K002	9	-	6K781	9	24	7K705	17	10
4K002	11	5	6K782	9	26	7K708	7f	2
4K103	3	22	6K783	9	27	7K708	17	19
4K103	3b	24	6K783	9b	15	7K709	7b	A
4K463	9	2	6K790	9	1	7K710	7b	B
4K463	9b	42	6K790	9b	41	7K711	15	1
4K463	11	3	6K790	11	2	7K719	7f	1
4K463	11b	3	6K790	11b	2	7K719	15	4
4K551	13	21	6K791	9	-	7K720	17	1
4K552	13	22	6K791	9b	*1	7K721	15	5
4K900	7d	44	6K793	9	31	7K722	17	3
4K903	7d	45	6K793	11	7	7K723	17	4
4K905	7d	47	6K793	13	2	7K725	15	14
4K912	7f	3	6K795	9	-	7K726	15	6
4K912	17	18	6K795	13	A	7K727	15	6
5K794	25	5	6K796	9	32	7K737	15	15
5K798	25	15	6K796	13	14	7K738	15	15-6
6K135	21	12	6K797	13	13	7K740	21	13
6K153	15	22	6K800	3	23	7K743	17	6

Part No.	Page No.	Index No.	Part No.	Page No.	Index No.	Part No.	Page No.	Index No.
7K759	17	13	8K365	9b	2	9K067	24A	3
7K761	17	15	8K367	9b	22	9K070	13	23
7K762	17	15	8K367	11b	5	9K072	24A	1
7K762	17	17	8K369	9b	37	9K073	24A	2
7K763	17	17	8K370	9b	38	9K077	13	25
7K764	17	15	8K370	11b	18	9K079	24A	6
7K764	17	17	8K370	13	2	9K129	9b	44
7K765	17	17	8K373	11b	1	9K129	11b	21
7K766	17	16	8K392	3	1	9K160	19	5
7K767	17	16	8K393	3	1	9K387	21	7
7K770	17	10c	8K394	3	1			
7K771	17	10d	8K398	3	13			
7K772	17	10e	8K399	3	13			
7K773	17	10a	8K410	21	14			
7K774	17	10b	8K411	7d	1			
7K776	7b	1	8K412	7d	21			
7K779	7b	1	8K417	7d	22			
7K786	7b	3	8K419	7d	23			
7K790	7b	23	8K422	7d	15			
7K821	7	2	8K427	7d	16			
7K852	21	10	8K428	7d	14			
7K856	19	3	8K431	7d	2			
7K857	19	4	8K432	7d	12			
7K857	19	18	8K436	7d	4			
7K858	21	3	8K437	7d	3			
7K861	9b	8	8K444	7d	43			
7K861	19	1	8K447	7d	20			
7K863	19	8	8K448	7d	-			
7K863	19	21	8K449	7f	4			
7K867	23	1	8K450	7f	5			
7K868	23	*	8K451	7f	6			
7K870	21	1-6	8K452	7f	5			
7K871	21	1	8K453	7f	6			
7K880	23	7	8K455	7d	-			
7K885	21	2	8K466	15	14			
7K886	21	*	8K467	15	14			
7K887	15	23	8K473	17	15			
7K887	21	11	8K474	17	15			
7K919	23	10	8K475	17	17			
7K920	23	8	8K477	7d	34			
7K921	23	17	8K607	7d	5			
7K922	23	*	8K619	9b	14			
7K923	23	*	8K620	9b	14a			
7K927	21	*	8K621	9b	3			
7K946	19	14	8K625	9b	2a			
7K952	19	17	8K626	9b	4			
7K954	19	26	8K627	9b	13			
8K096	7d	17	8K641	13	13			
8K096	15	2	8K801	9b	43			
8K341	7d	-	8K801	11b	20			
8K364	9b	23	9K060	21	14			
8K364	11b	6						